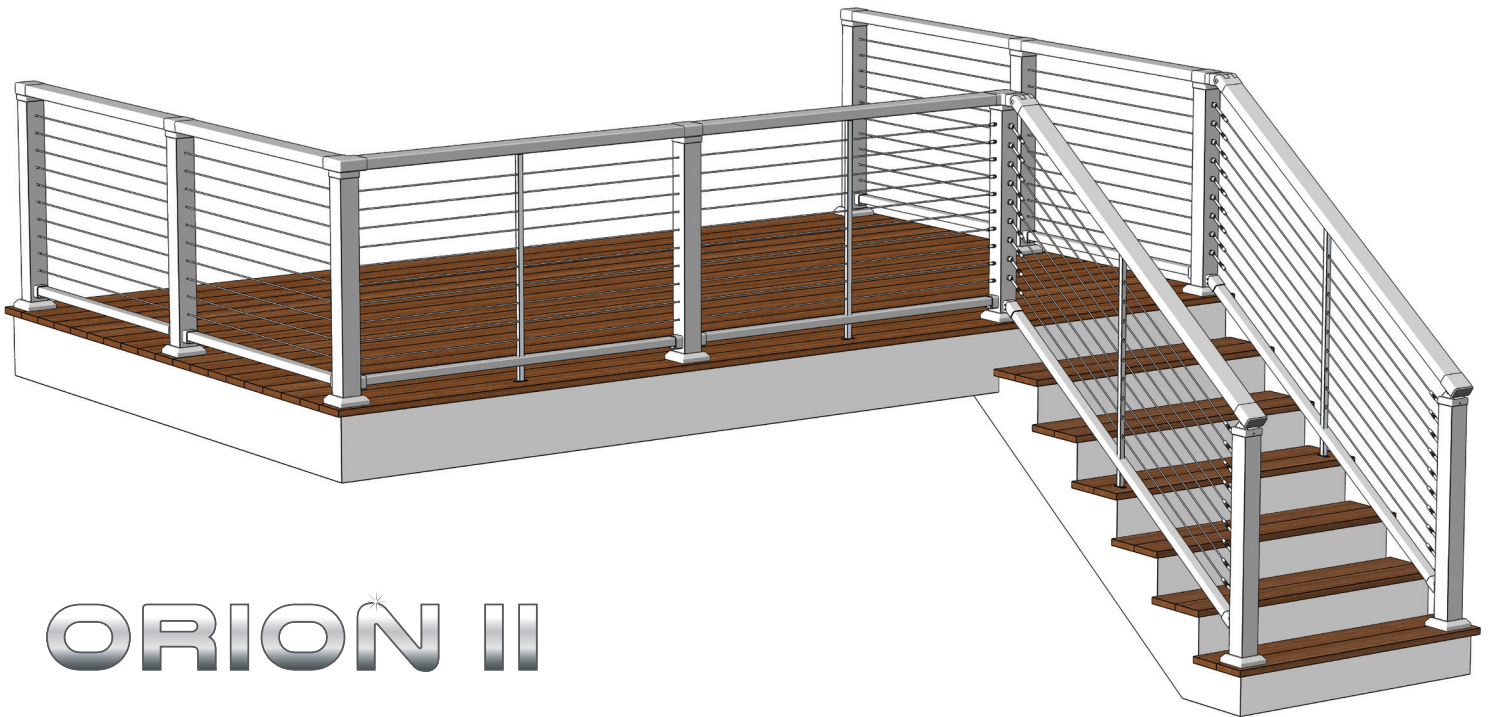


# ORION II CABLE RAILING SYSTEM

## ORION II System

**Powder-Coated Aluminum Railing  
System with a Flat Top Rail &  
Stainless Steel Cable Infill**



# ORION II

**Cost:** \$ \$ \$ \$

**Standard Color Options:**

Black (-BK), Bronze (-BZ), White (-WH)



Black



Bronze



White

**Powder Coat Finish:** Matte/Textured



**TOUCH-UP PAINT, 6 oz.**

Black (A0906-P052-BK)  
Bronze (A0906-P052-BZ)  
White (A0906-P052-WH)

Use Atlantis touch-up paint to fix any scratches which may occur during the installation process.

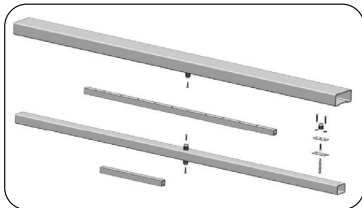
## ORION II Cable Railing System

The ORION II System features a powder-coated aluminum framework combined with horizontal stainless steel cable infill. The framework is made up of 3" x 3" posts, standard bottom rail and a flat continuous top rail. The cable infill consists of HandiSwage™ fittings and 1/8" cable. The straight and stair rail kits are available in 6' lengths and include a top rail, bottom rail, pre-drilled stabilizer, support block assembly and connectors. Post kits come pre-drilled for 3" cable spacing in heights of 36" or 42". The simple design of the top rail allows installers to handle a variety of rail transitions using a small set of adaptive rail fittings and common installation tools.

The ORION II System is offered in a matte textured powder coat finish of black, bronze and white (featured to the left). Atlantis touch-up paint is also available in these colors and finish to fix any scratches that may occur during installation.

# ORION II CABLE RAILING SYSTEM

## ORION II

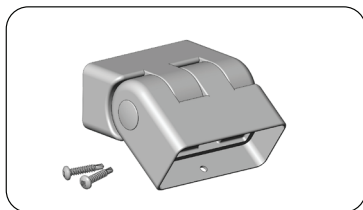
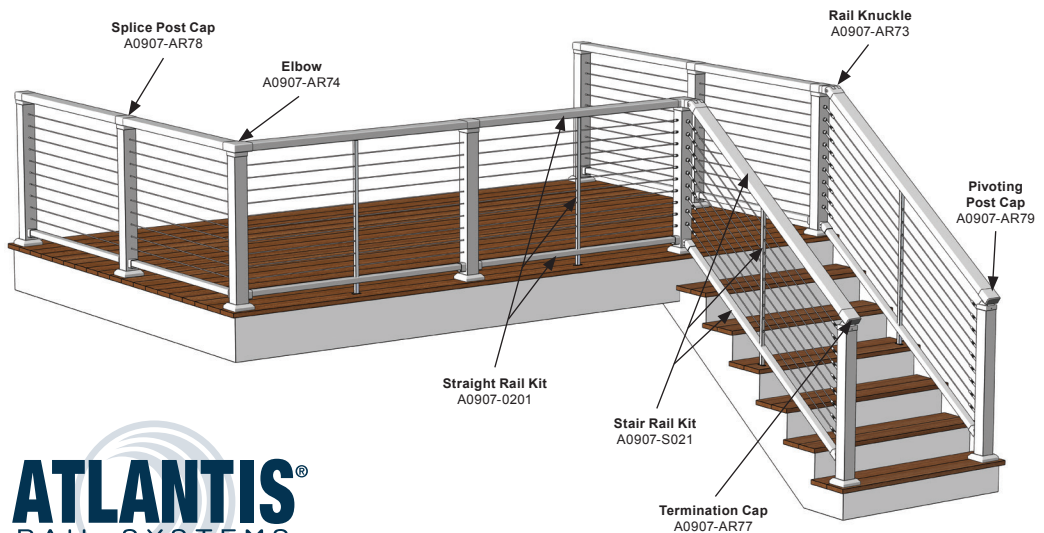


### Rail Kits

Straight Rail Kit (A0907-0201-XX)

Stair Rail Kit (A0907-S021-XX)

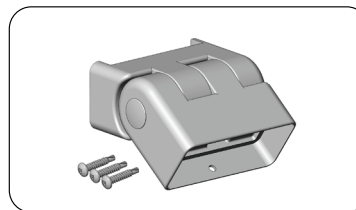
Straight and stair rail kits are offered in 6' lengths and include top and bottom rails, pre-drilled stabilizer, support block assembly and connectors. The top rail can be cut and concealed inside associated fittings for a clean look.



### Rail Knuckle

(A0907-AR73-XX)

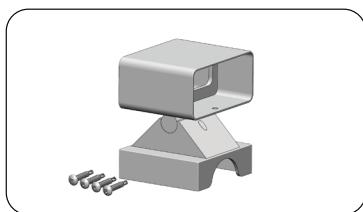
The ORION II Stair Knuckle is an adjustable fitting for connecting angled stair rails to 36" height level sections.



### Post Mount Rail Knuckle

(A0907-AR76-XX)

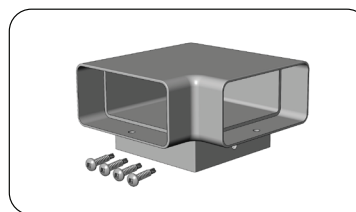
The ORION II Post Mount Stair Knuckle mounts onto the side of a post and transitions 42" height rail sections to in-line or perpendicular stair rails.



### Pivoting Post Cap

(A0907-AR79-XX)

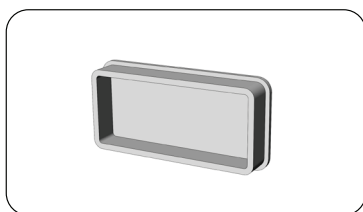
The ORION II Pivoting Post Cap is typically used in stair applications on mid and bottom stair posts to join top rails.



### 90-Degree Elbow

(A0907-AR74-XX)

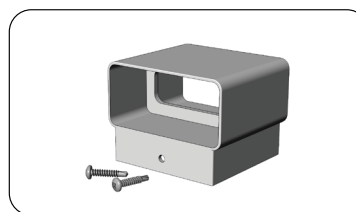
The ORION II 90 Degree Elbow Post Cap is utilized where rail sections meet at a 90 degree angle. 45 and 60 degree elbows are also available.



### Termination Cap

(A0907-AR77-XX)

The ORION II Termination Cap fits into the unused side of a post cap fitting for a finished look.



### Post Cap Splice

(A0907-AR78-XX)

The ORION II Splice Post Cap is commonly used on mid posts to join top rails on level sections. It can also be used on end posts in conjunction with a Termination Cap.

\* "XX" in the part number is the color designation. Replace with "BK" for black, "BZ" for bronze and "WH" for white. Powder coated finish is matte/textured.