



ADA Handrail

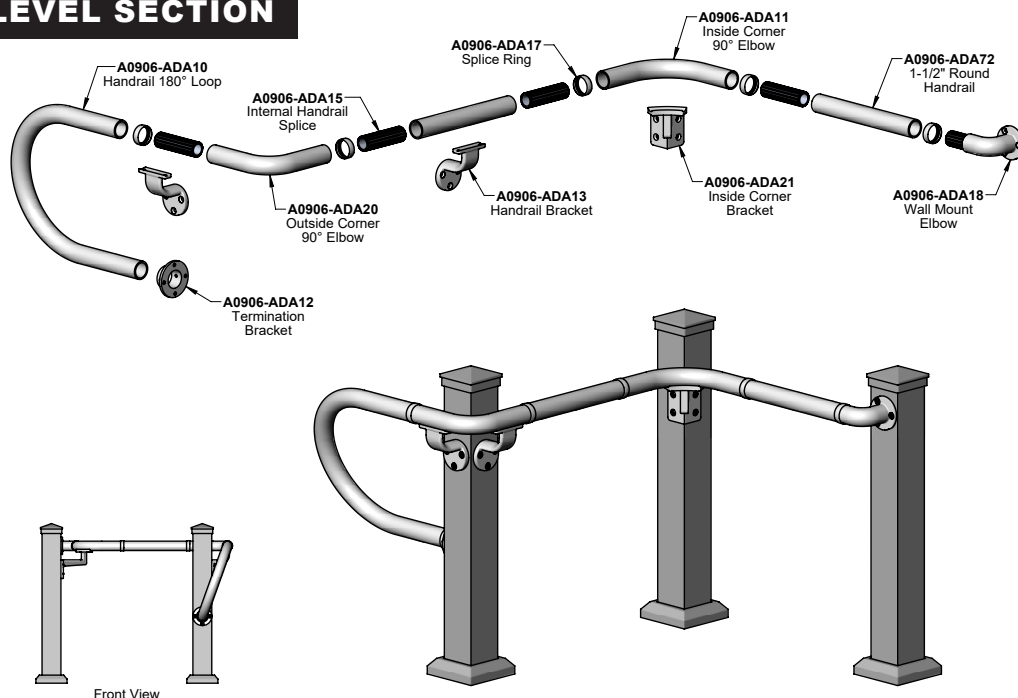
Powdercoated Aluminum ADA Handrail Systems

Revision 1

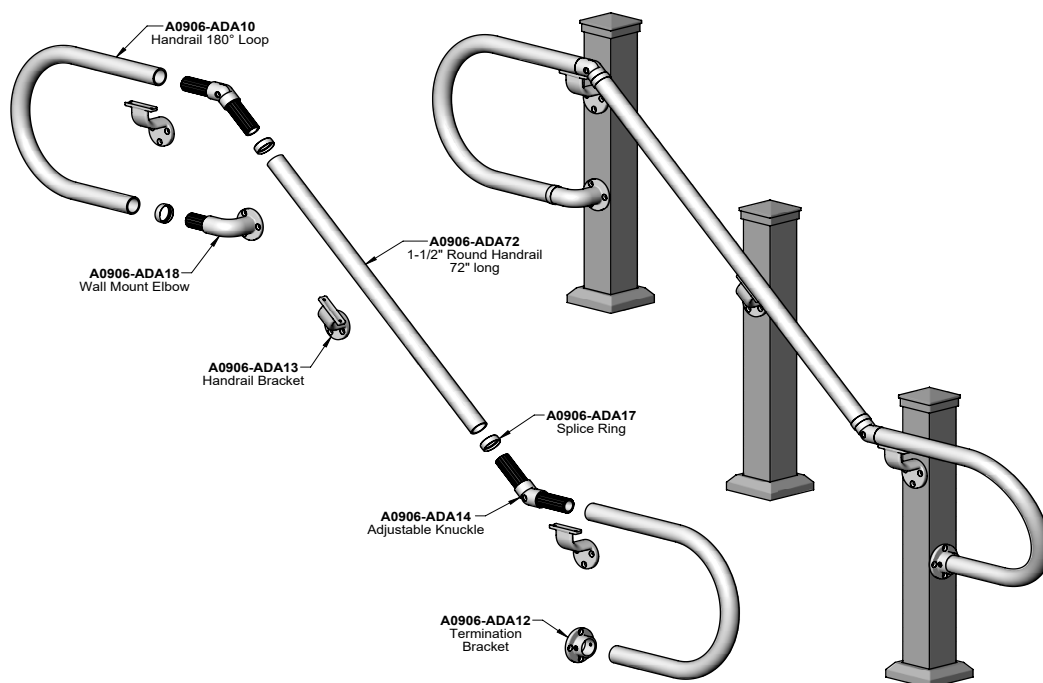
The Surface Mount option for this ADA Handrail System is designed to pair with our NOVA Rail Systems, but can be used on wood and composite posted systems as well.

The simple design allows installers to handle a variety of handrail transitions using a small set of components. This 1-1/2" diameter handrail system is made from aluminum and is powdercoated for a durable finish.

LEVEL SECTION



STAIR SECTION



Color Options:



Black



White



Bronze

Powder Coat Finish:

Textured



Metallic Silver



Dark Brown

Powder Coat Finish:

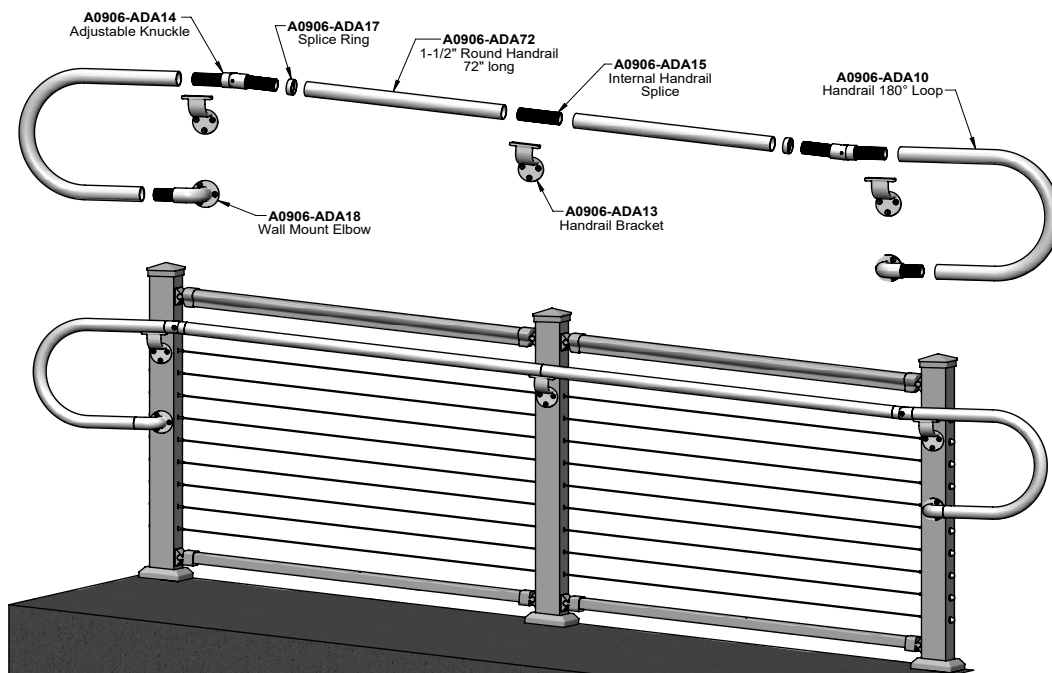
Satin/Smooth



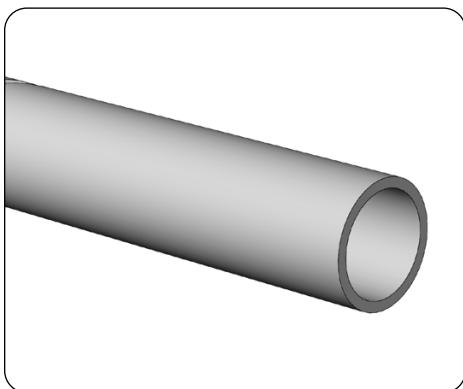
Touch Up Paint, 6 oz.

Black (A0906-P052-BK)
White (A0906-P052-WH)
Bronze (A0906-P052-BZ)
Metallic Silver (P0904-P001-MT)
Dark Brown (P0904-P001-BR)

RAMP SECTION



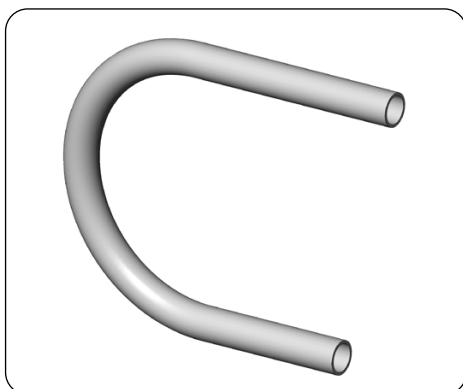
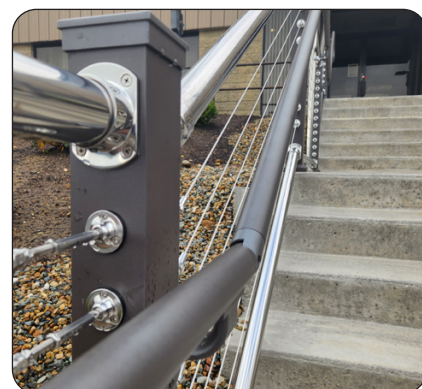
Components



Handrail

ADA Rail Tube 1.5"x 6', Aluminum
(A0906-ADA72-XX)

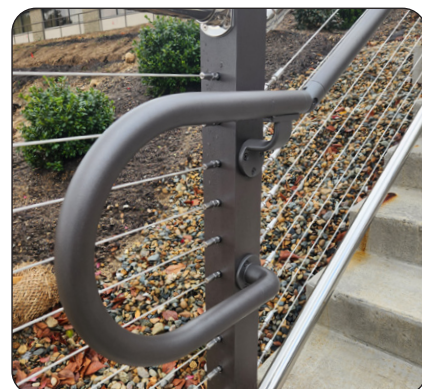
The main component to Atlantis Rail's ADA Handrail system is the powdercoated 1-1/2" diameter aluminum tubing supplied in 6 ft. lengths. Cut to size in the field using a carbide tipped blade on a miter saw. Cut edges are concealed using the Splice Rings or install factory edges next to each other for a clean look. This aluminum tubing can be drilled easily for panhead mounting screws. Available in standard NOVA and Spectrum color options.

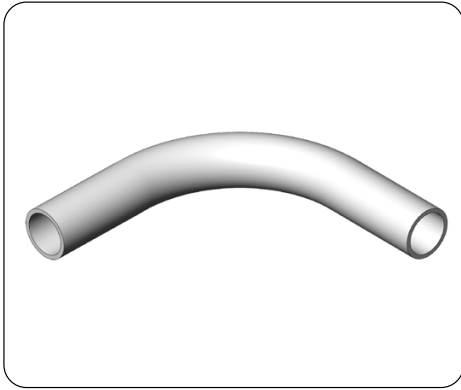


End Loop

ADA Loop, Aluminum
(A0906-ADA10XX)

Use this ADA Compliant universal 180 degree handrail loop at the top and bottom of ramps or stairs. Compatible with "Surface Mount" and "Clamp On" handrail brackets and associated fittings. Ends can be cut to proper length to meet the ADA requirements for end loop dimensions in relation to stair treads at the top and bottom of stairs and/or ramps. Diameter of tubing is 1-1/2" to match the handrail. Available in standard NOVA and Spectrum color options.

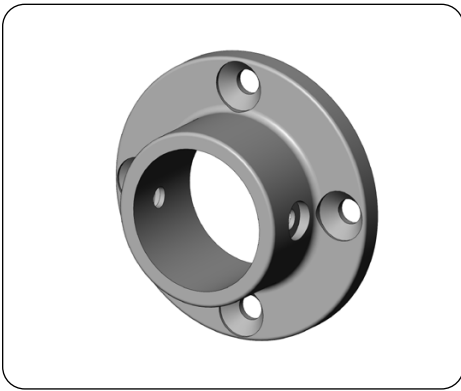
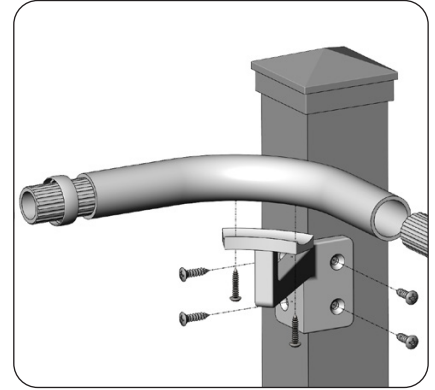




Inside Corner 90° Elbow

ADA 90 Deg Elbow, Aluminum
(A0906-ADA11-XX)

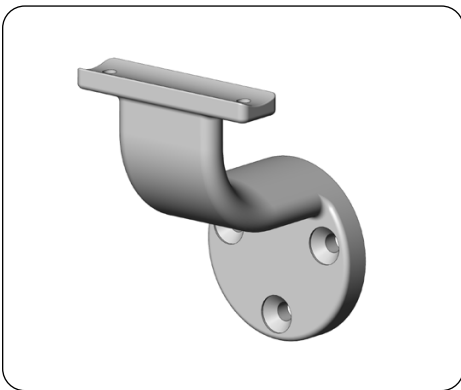
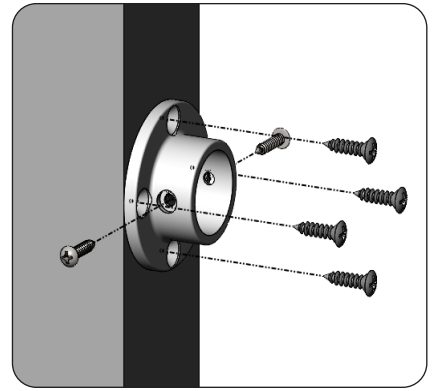
Use in conjunction with the surface mount Inside Corner Bracket (A0906-ADA21) on NOVA or Wood/Composite 4" x 4" post railing system. Curve of this elbow precisely matches the curve on the Inside Corner Bracket and easily installs using (2) panhead screws. Diameter of tubing is 1-1/2" to match the handrail. Available in standard NOVA color options.



Termination Bracket

ADA Loop Termination Bracket, Aluminum
(A0906-ADA12-XX)

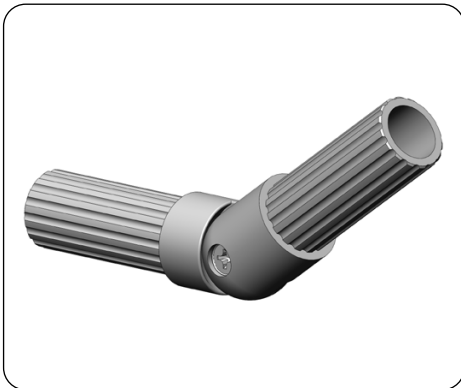
Depending on your design, use this bracket to terminate End Loop to the face of post on NOVA system or to terminate the handrail into any flat structure (such as a wall or column). Mounts to surface using (4) flathead screws and attaches to handrail using (2) panhead screws. Designed to accommodate the 1-1/2" diameter tubing. Available in standard NOVA color options.



Handrail Bracket

ADA Rail Bracket, Aluminum
(A0906-ADA13-XX)

Standard handrail bracket for surface mounting ADA handrail on NOVA or Wood/Composite 4" x 4" post railing system. Mounts to surface using (3) flathead screws and attaches to handrail using (2) panhead screws. Designed to support the 1-1/2" diameter tubing. Mount the bracket straight for level section handrail or rotate to match the angle of stairs and ramps. Available in standard NOVA color options.

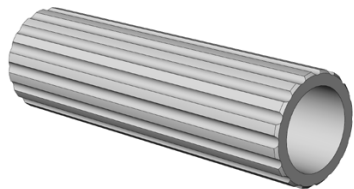


Adjustable Knuckle

ADA Rail Knuckle Assembly, Aluminum
(A0906-ADA14-XX)

Universal adjustable knuckle for angled handrail transitions. Use this knuckle to go from stair rail to level handrail sections and/or end loops. Secure the handrail to the knuckle by predrilling mounting holes and installing the supplied panhead screws. Lock the knuckle to the desired angle by tightening the phillips head screw at the center point of the knuckle. Available in standard NOVA and Spectrum color options.

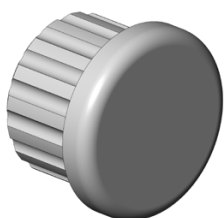
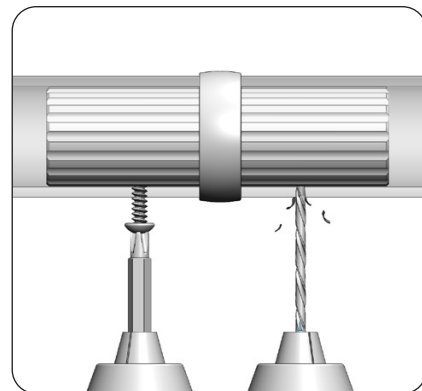




Handrail Splice

ADA Handrail Splice, Aluminum
(A0906-ADA15-XX)

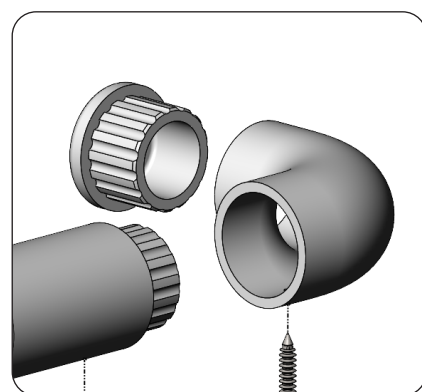
Use this internal splice for joining ADA handrail sections. Fully secure splice connections by predrilling mounting holes and installing the supplied panhead screws. For best results center the internal splice evenly at each joint. The cut edges of tubing being spliced can be concealed using the Splice Rings (except over the surface mount Handrail Bracket). Available in standard NOVA and Spectrum color options.



Handrail Cap

ADA Handrail Cap, Aluminum
(A0906-ADA16-XX)

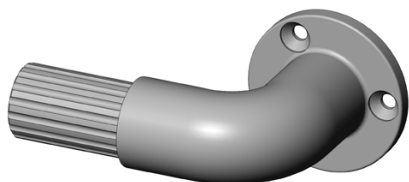
This universal handrail end cap is used to cap off exposed ends of tubing. Secure to the handrail by installing a single panhead screw. Available in standard NOVA and Spectrum color options.



Splice Ring

ADA Splice Ring, Aluminum
(A0906-ADA17-XX)

Use along with Handrail Splice (A0906-ADA15) where ADA handrail ends connect. The low profile design of the splice ring conceals cut ends of rail, while maintaining a streamlined continuous handrail. Can be used for the majority of connection points, but cannot be used where handrail is joined over the surface mount Handrail Brackets. Available in standard NOVA and Spectrum color options.

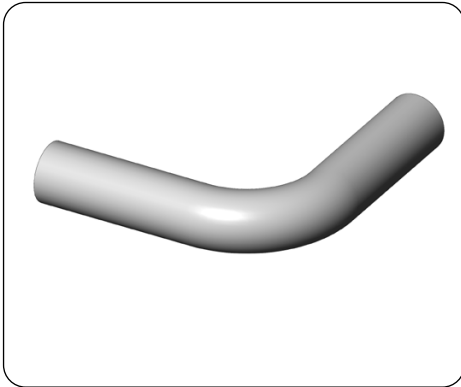


Wall Mount Elbow

ADA Wall Mount Elbow, Aluminum
(A0906-ADA18-XX)

Use this elbow to terminate the ADA handrail into the side of end post on NOVA system or into any flat structure (such as a wall or column). Mounts to surface using (3) flathead screws and attaches to handrail using (1) panhead screw. Designed to accommodate the 1-1/2" diameter tubing. Available in standard NOVA color options.



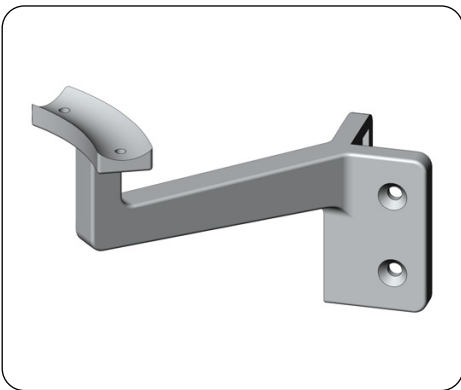
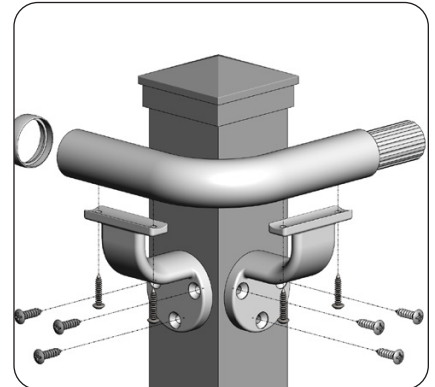


Outside Corner 90° Elbow

ADA 90° Outside Corner Elbow, Aluminum
(A0906-ADA20-XX)

.....

This universal corner elbow is used to wrap ADA handrail around the outside of 90 degree corners and is supported on each end by handrail brackets. Connect to handrail using Handrail Splices (A0906-ADA15) and Splice Rings (A0906-ADA17). Secure handrail connections using the supplied panhead screws at joints and to the handrail brackets. Available in standard NOVA and Spectrum color options.

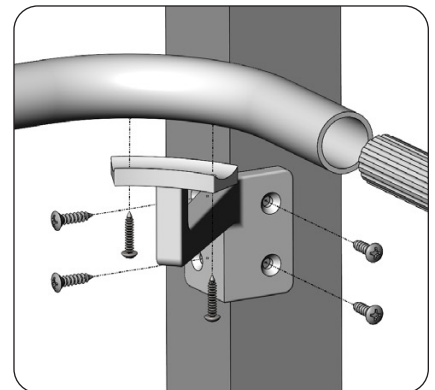


Corner Bracket

ADA Inside Corner Bracket, Aluminum
(A0906-ADA21-XX)

.....

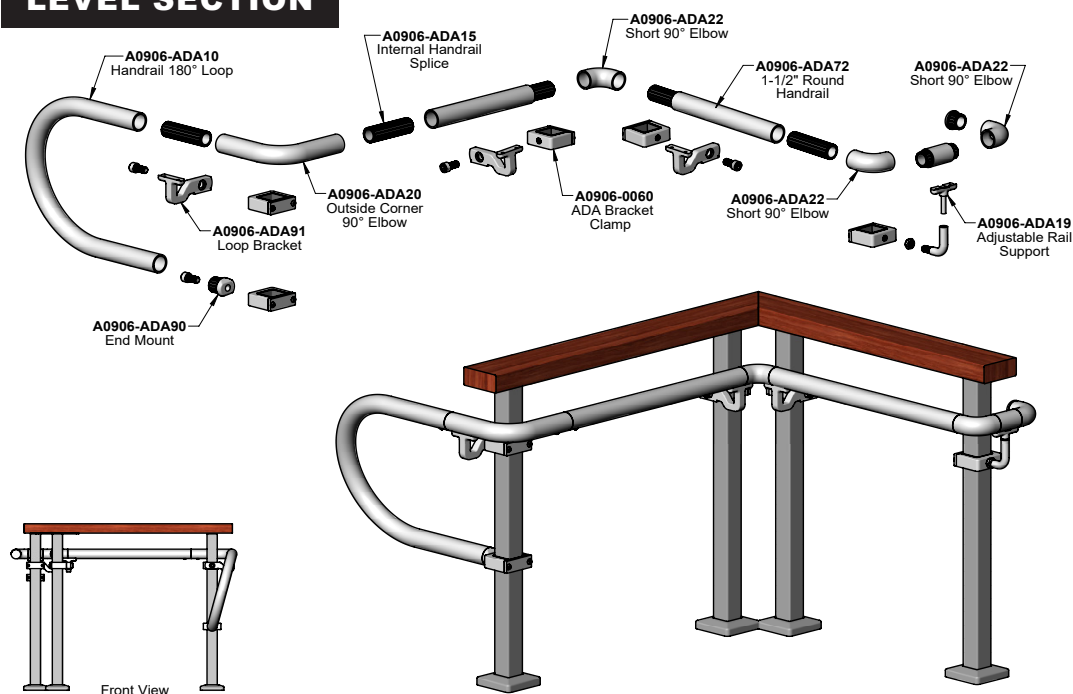
Use this handrail bracket to support ADA handrail on 90 degree inside corners. Use in conjunction with the Inside Corner 90 Degree Elbow (A0906-ADA11). Designed to surface mount to the corner of NOVA posts (as well as 4"x 4" wood/composite posts). Mounts to surface using (4) flathead screws and attaches to handrail using (2) panhead screws. Available in standard NOVA color options.



The Clamp On option for this ADA Handrail System is designed to pair with our SPECTRUM Rail System. The handrail is attached to each post using a series of “clamp on” fittings.

The simple design allows installers to handle a variety of handrail transitions using a small set of components. This 1-1/2" diameter handrail system is made from aluminum and is powdercoated for a durable finish.

LEVEL SECTION



Color Options:



Black



White



Bronze

Powder Coat Finish: Textured



Metallic Silver



Dark Brown

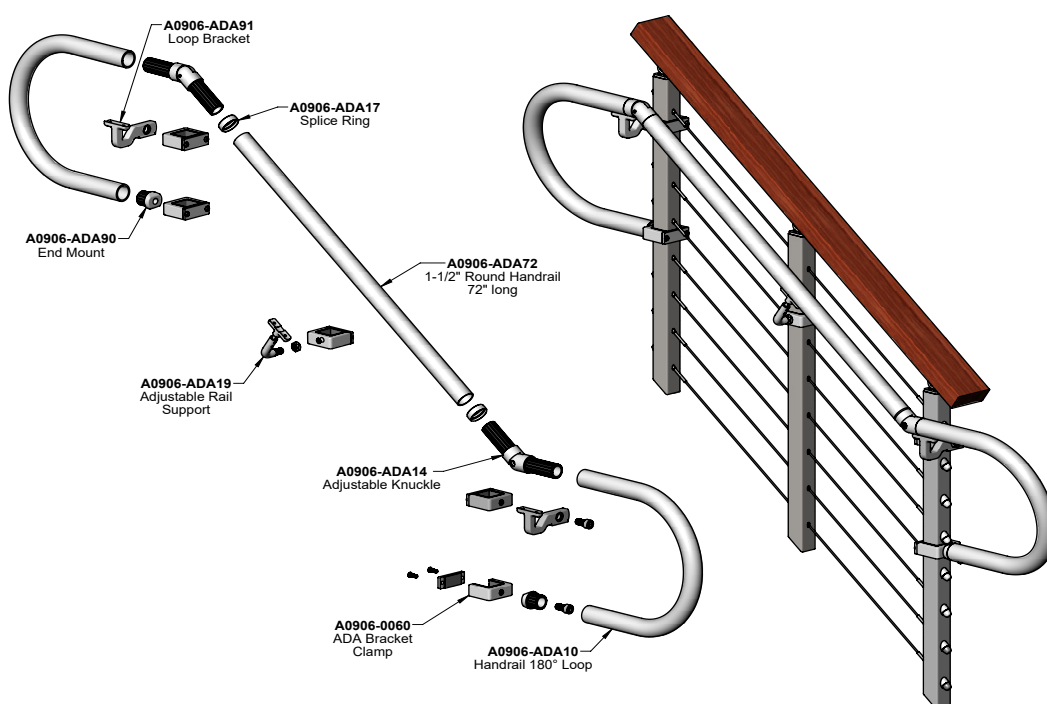
Powder Coat Finish: Satin/Smooth

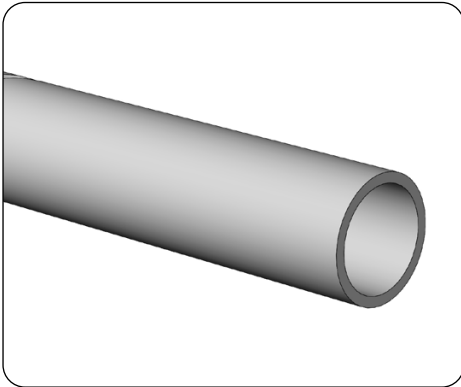


Touch Up Paint, 6 oz.

Black (A0906-P052-BK)
White (A0906-P052-WH)
Bronze (A0906-P052-BZ)
Metallic Silver (P0904-P001-MT)
Dark Brown (P0904-P001-BR)

STAIR SECTION

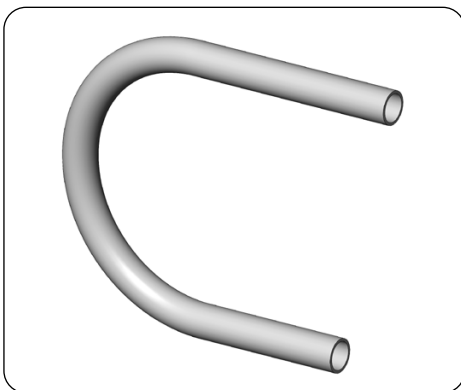
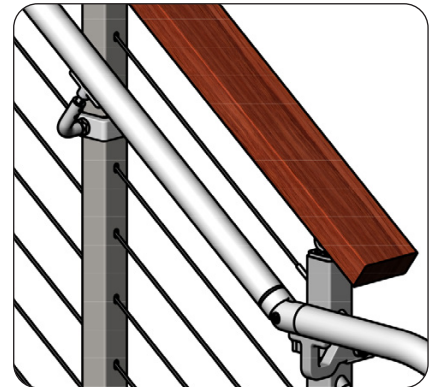




Handrail

ADA Rail Tube 1.5"x 6", Aluminum
(A0906-ADA72-XX)

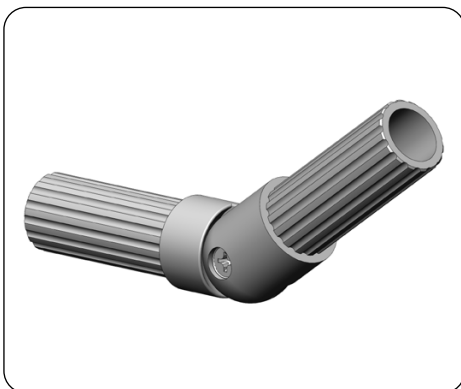
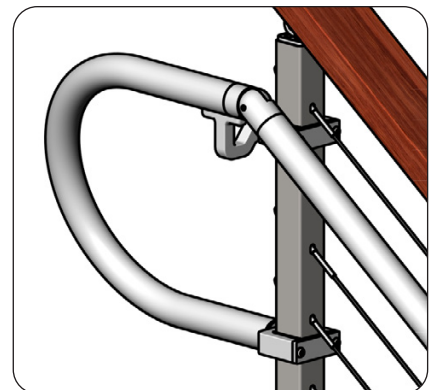
The main component to Atlantis Rail's ADA Handrail system is the powdercoated 1-1/2" diameter aluminum tubing supplied in 6 ft. lengths. Cut to size in the field using a carbide tipped blade on a miter saw. Cut edges are concealed using the Splice Rings or install factory edges next to each other for a clean look. This aluminum tubing can be drilled easily for panhead mounting screws. Available in standard NOVA and Spectrum color options.



End Loop

ADA Loop, Aluminum
(A0906-ADA10XX)

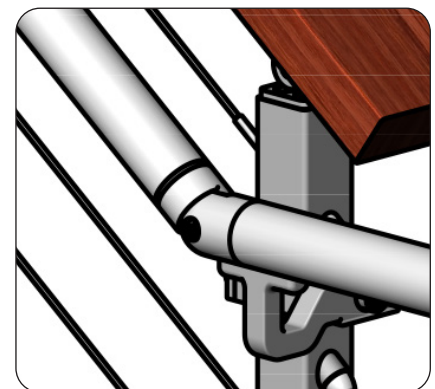
Use this ADA Compliant universal 180 degree handrail loop at the top and bottom of ramps or stairs. Compatible with "Surface Mount" and "Clamp On" handrail brackets and associated fittings. Ends can be cut to proper length to meet the ADA requirements for end loop dimensions in relation to stair treads at the top and bottom of stairs and/or ramps. Diameter of tubing is 1-1/2" to match the handrail. Available in standard NOVA and Spectrum color options.



Adjustable Knuckle

ADA Rail Knuckle Assembly, Aluminum
(A0906-ADA14-XX)

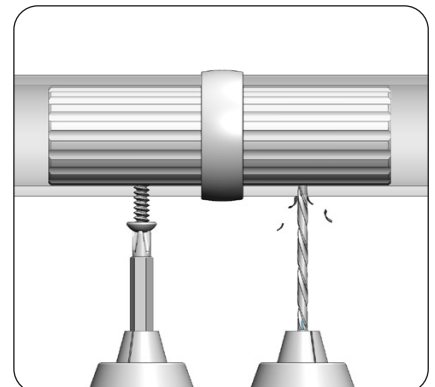
Universal adjustable knuckle for angled hand-rail transitions. Use this knuckle to go from stair rail to level handrail sections and/or end loops. Secure the handrail to the knuckle by predrilling mounting holes and installing the supplied panhead screws. Lock the knuckle to the desired angle by tightening the phillips head screw at the center point of the knuckle. Available in standard NOVA and Spectrum color options.

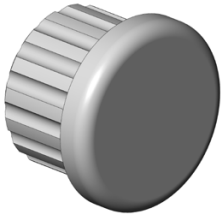


Handrail Splice

ADA Handrail Splice, Aluminum
(A0906-ADA15-XX)

Use this internal splice for joining ADA hand-rail sections. Fully secure splice connections by predrilling mounting holes and installing the supplied panhead screws. For best results center the internal splice evenly at each joint. The cut edges of tubing being spliced can be concealed using the Splice Rings (except over the surface mount Handrail Bracket). Available in standard NOVA and Spectrum color options.

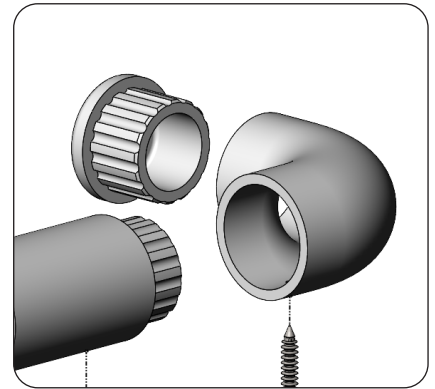




Handrail Cap

ADA Handrail Cap, Aluminum
(A0906-ADA16-XX)

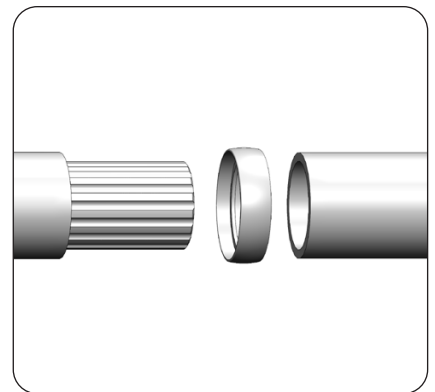
This universal handrail end cap is used to cap off exposed ends of tubing. Secure to the handrail by installing a single panhead screw. Available in standard NOVA and Spectrum color options.



Splice Ring

ADA Splice Ring, Aluminum
(A0906-ADA17-XX)

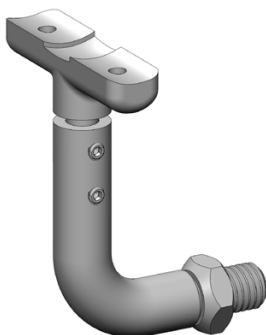
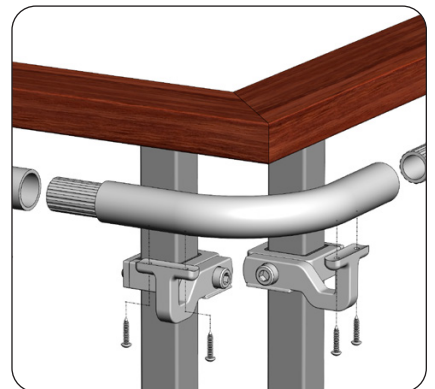
Use along with Handrail Splice (-ADA15) where ADA handrail ends connect. The low profile design of the splice ring conceals cut ends of rail, while maintaining a streamlined continuous handrail. Can be used for the majority of connection points, but cannot be used where handrail is joined over the surface mount Handrail Brackets. Available in standard NOVA and Spectrum color options.



Outside Corner 90° Elbow

ADA 90° Outside Corner Elbow, Aluminum
(A0906-ADA20-XX)

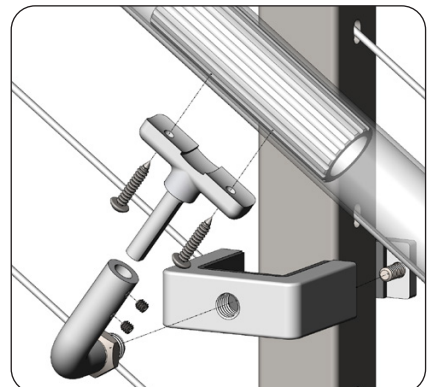
This universal corner elbow is used to wrap ADA handrail around the outside of 90 degree corners and is supported on each end by handrail brackets. Connect to handrail using Handrail Splices (A0906-ADA15) and Splice Rings (A0906-ADA17). Secure handrail connections using the supplied panhead screws at joints and to the handrail brackets. Available in standard NOVA and Spectrum color options.

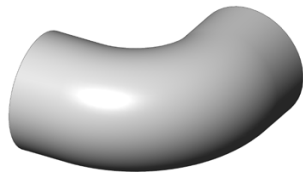


Adjustable Rail Support

ADA Mid Post Support, Aluminum
(A0906-ADA19-XX)

This adjustable handrail bracket is used in conjunction with ADA Clamps (A0906-0060 & A0906-0060-EC) on Spectrum stair mid posts. Rail support is threaded into the ADA Clamp attached to the stair mid post. It can be angled to match the angle of the stairs and its height can be adjusted to meet the desired handrail height. Simply loosen the set screws, adjust height and tighten set screws to lock into place. Available in standard Spectrum color options.

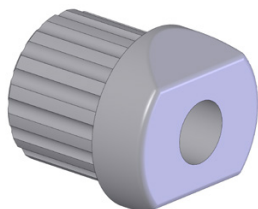
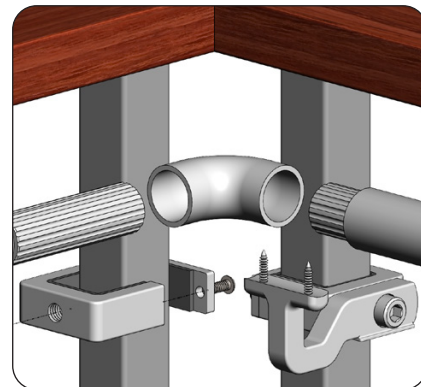




Short 90° Elbow

ADA 90° Short Corner Elbow, Aluminum
(A0906-ADA22-XX)

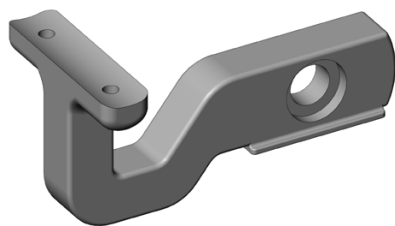
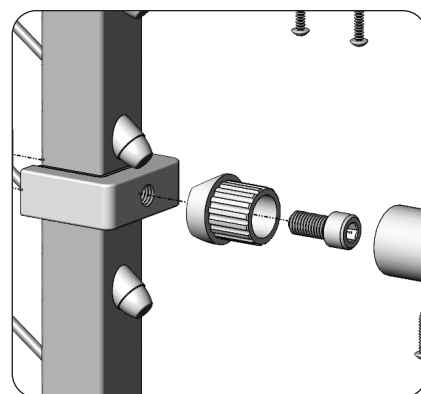
Use as inside corner or return elbow for ADA handrail on Spectrum. Versatile small dimension elbow which offers a solution to most complex transitions. On inside corners, the handrail is supported on either side of elbow utilizing Loop Bracket supports. Easily installs using internal splices and panhead screws. Available in standard NOVA and Spectrum color options.



Tube End Mount

ADA Tube End Mount, Aluminum
(A0906-ADA90-XX)

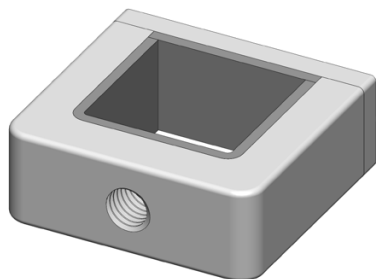
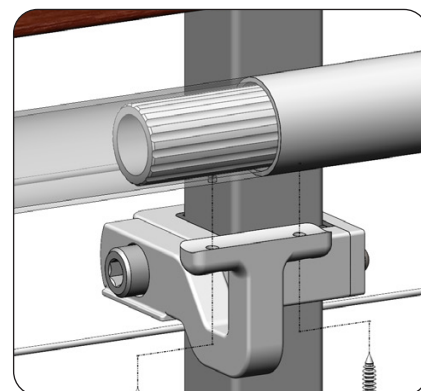
Use for handrail returns or to terminate the lower end of End Loop to ADA Clamp on Spectrum post. Attaches to the ADA Clamp with (1) large machine screw and to the handrail using (1) panhead screw. Available in standard Spectrum color options.



Loop Bracket

ADA Loop Bracket, Aluminum
(A0906-ADA91-XX)

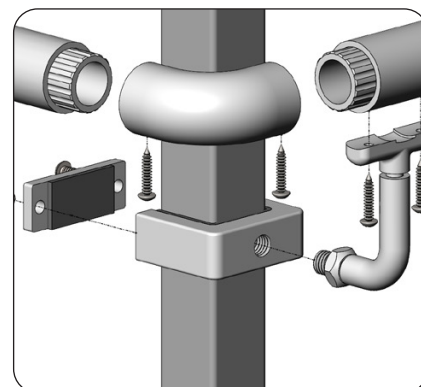
Handrail bracket designed for use with ADA Clamps (A0906-0060 & A0906-0060-EC). Used to support End Loops and ADA handrail on level sections. Attaches to the ADA Clamp with (1) large machine screw and to the handrail with (2) panhead screws. Available in standard Spectrum color options.

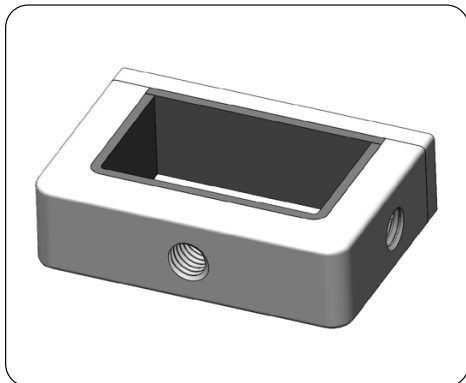


Bracket Clamp, Standard

ADA Bracket Clamp, Aluminum
(A0906-0060-XX)

This versatile clamp fitting allows the installer to attach ADA handrail supports to Spectrum posts. Clamp assembly onto post by fastening the machine threaded allen screws. The body of clamp features a single threaded hole for easy attachment of handrail support brackets. Compatible with the Adjustable Handrail Support (A0906-ADA19) and Loop Bracket (A0906-ADA91). Available in standard Spectrum color options.





Bracket Clamp, EC Post Version

ADA Bracket Clamp - EC, Aluminum
(A0906-XX60-EC)

.....

This versatile clamp fitting allows the installer to attach ADA handrail supports to Spectrum EC (End/Corner) posts. Clamp assembly onto post by fastening the machine threaded allen screws. The body of clamp features threaded holes on adjacent sides for easy attachment and configuration of handrail support brackets. Compatible with the Adjustable Handrail Support (A0906-ADA19) and Loop Bracket (A0906-ADA91). Available in standard Spectrum color options.

