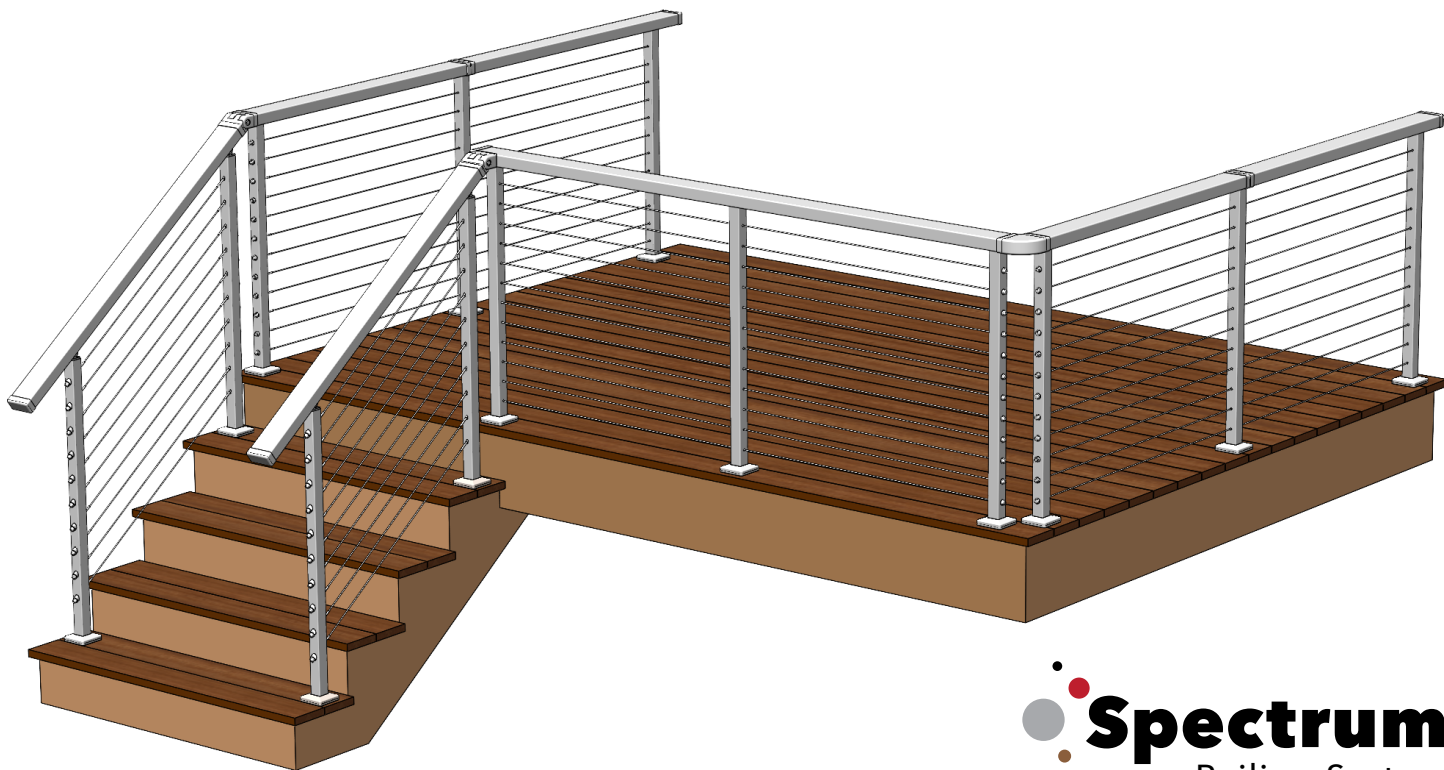


SPECTRUM TOP RAIL SYSTEM



Spectrum Top Rail

**Powder-Coated Aluminum Top Rails
for Spectrum Cable Railing**



Spectrum Top Rail System

The Spectrum Top Rail System consists of Spectrum posts that can be fascia or surface mounted and an extruded aluminum 1-5/8" x 3-1/2" top rail. The top rail is available in standard lengths of 4', 6' and 8' and features a small assortment of adaptive rail fittings. The system is designed for use with Spectrum posts only. The simple design of the top rail system allows installers to handle a variety of rail transitions using a small set of components and common installation tools. The top rail and associated fittings are made of aluminum and powder-coated in the Spectrum colors to the left. The Spectrum Top Rail System accommodates stair angles of 33 to 38 degrees using stock material. Special (SP) posts are required for angles under 33 degrees and over 38 degrees.

COST: \$ \$ \$ \$

COLOR SELECTION

STANDARD



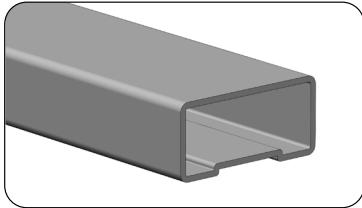
SPECIAL



Colors from top, left to right: Black, Metallic Silver, Pure White, Dark Brown, Pebble Grey and Light Brown.

**Uncoated option available upon request.*

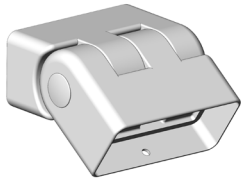
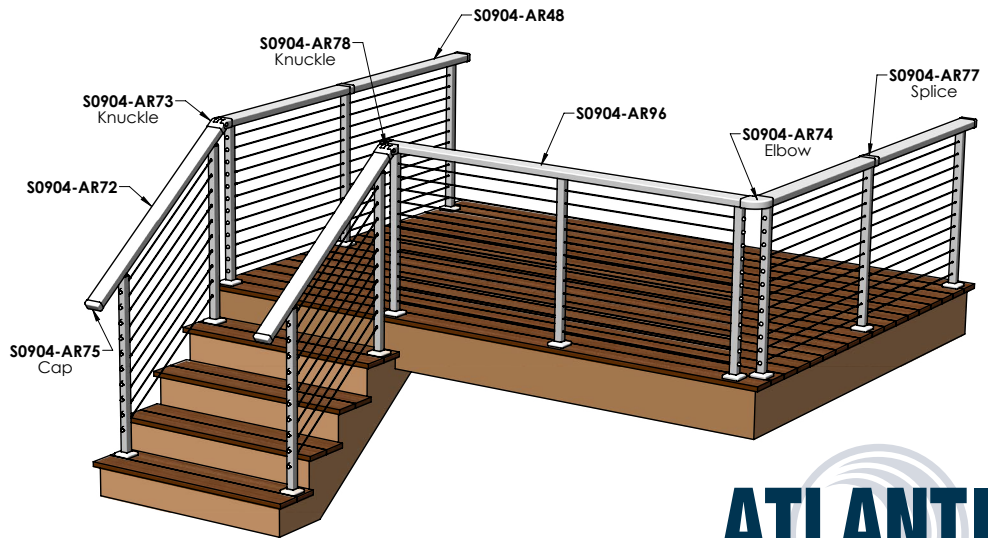
SPECTRUM TOP RAIL COMPONENTS



Top Rail

4 ft. (S0904-AR48-XX)
6 ft. (S0904-AR72-XX)
8 ft. (S0904-AR96-XX)

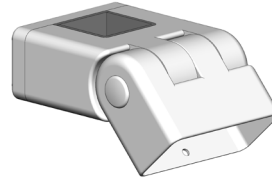
The powder-coated aluminum top rail is available in the standard and special Spectrum colors and in lengths of 4', 6' and 8'. The top rail can be cut and concealed inside associated fittings for a clean look.



Rail Knuckle

(S0904-AR73-XX)

The Spectrum Stair Rail Knuckle is an adjustable fitting for connecting angled stair rails to 36" height level sections.



Handrail Clamp

(S0904-AR76-XX)

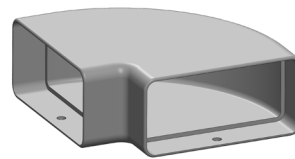
The Spectrum Handrail Clamp is an adjustable fitting for connecting angled stair rails to 42" height level sections.



Rail Mount Stair Knuckle

S0904-AR78-XX)

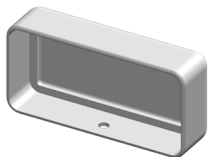
The Spectrum Rail Mount Stair Knuckle transitions 36" height rail sections to perpendicular stair rails.



90-Degree Elbow

(S0904-AR74-XX)

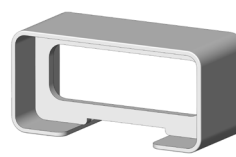
The Spectrum 90 Degree Elbow is utilized where rail sections meet at a 90 degree angle.



Rail Cap

(S0904-AR75-XX)

The Spectrum Rail Cap is installed on the exposed end of a top rail for a finished look.



Railing Splice

(S0904-AR77-XX)

The Spectrum Wide Splice mates top rail sections and conceals cut ends.

* "XX" in the part number is the color designation. Replace with "BK" for black, "BR" for dark brown, "MT" for metallic silver, "WH" for pure white or "SP" for one of the special colors.