

# SPECTRUM RAIL CAP, NOTCHED

## ALUMINUM



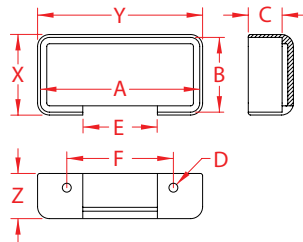
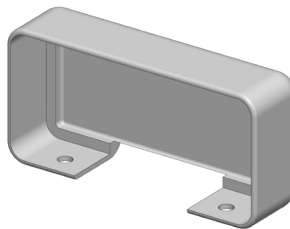
Import



Precision  
Cast



New  
Product



ITEM	A	B	C	D	E	F	COLOR	X (height)	Y (length)	Z (width)	WT (lb)	PACKAGING TYPE	EACH (qty)	INNER (qty)	CARTON (qty)	UPC
S0904-AR65	3.53"	1.65"	0.75"	0.20"	1.65"	2.36"	UNCOATED	1.78"	3.66"	1.00"	0.12	POLYBAG	1	1	1	791506097341
S0904-AR65-BK	3.53"	1.65"	0.75"	0.20"	1.65"	2.36"	BLACK	1.78"	3.66"	1.00"	0.12	POLYBAG	1	1	1	791506097358
S0904-AR65-BR	3.53"	1.65"	0.75"	0.20"	1.65"	2.36"	DARK BROWN	1.78"	3.66"	1.00"	0.12	POLYBAG	1	1	1	791506097365
S0904-AR65-MT	3.53"	1.65"	0.75"	0.20"	1.65"	2.36"	METALLIC SILVER	1.78"	3.66"	1.00"	0.12	POLYBAG	1	1	1	791506097372
S0904-AR65-WH	3.53"	1.65"	0.75"	0.20"	1.65"	2.36"	PURE WHITE	1.78"	3.66"	1.00"	0.12	POLYBAG	1	1	1	791506097389

**NOTE:**

**ALL DIMENSIONS ARE NOMINAL (+/- 3%) AND ARE SUBJECT TO CHANGE WITHOUT NOTICE.**