



Gate Kit Installation

This instruction set will lead you through the process of installing Spectrum Gate Kits onto Spectrum railing systems. Gate kits come standard with cable/fittings pre-installed and are offered in standard Spectrum color options: Black, Dark Brown, Metallic Silver and White. These gate kits are install-er friendly and attach easily to stock Spectrum Hinge/Latch posts using the Mounting Hardware Kit (sold separately). Through-bolt attachment allows the gate to easily adjust to a variety of configurations. Customer sourced top rail is attached to the gate frame using the supplied screws.

TABLE OF CONTENTS

TOOLS NEEDED.....	1
WARNINGS.....	2
INSTALL TIPS.....	2
PRODUCT SPECIFICATIONS.....	2
GATE KIT INSTALLATION.....	3-5
Overview.....	3
Components, Gate.....	3
Configurations, Gate.....	3
Installing the Posts & Hardware.....	4
Installing the Gate.....	5



STORE YOUR ORDER INDOORS TO KEEP DRY!
Some items in your order have been shrink wrapped with a protective poly film. Avoid expos-ing these items to harsh weather and moisture to avoid damaging powder coated surfaces. When you're ready to install product, remove the protective shrink wrap before or immediately after installation.



CONTACT INFORMATION:

Atlantis Rail Systems

70 Armstrong Road
Plymouth, MA 02360

3900 Civic Center Drive
North Las Vegas, NV 89030

☎ (800) 541-6829 or ☎ (508) 732-9191

📠 (508) 732-9798

🌐 www.atlantisrail.com

TOOLS NEEDED

Here is a list of tools needed to install your Atlantis Rail Spectrum Gate Kit. Most of the required tools are common.

- Power Drill
- 5/32" Drill Bit
- 1/4" Drill Bit
- Pencil
- Tape Measure
- Ratchet & Socket Set
- Phillips Screw Driver
- Flathead Screw Driver
- Safety Glasses
- Level
- #2 Phillips Driver Bit
- 1/8" Allen Key
- Miter Saw
- Silicone Caulk
- Carpenter's Square

Specialized tools offered by Atlantis Rail

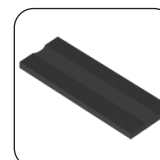
These tools are mainly used for installing cable on Spectrum Systems



Bench Swage Tool
#E0115-H600



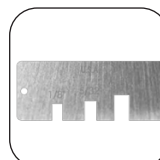
Hand Swage Tool
#E0113-H600



Cable Grip Pad
#E0114-0000



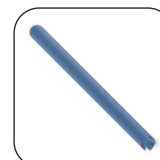
Cable Cutter
#C0989-00HD



After Swage Gauge
#E0113-HG00



3/8" & 7/16" Combination Wrench Set
#C0731-TK01-2



Grommet Install Tool
#E0916-1000



Touch-up Paint
Spectrum
#P0904-P000-XX
NOVA II
#A0906-P051-XX

WARNINGS

ALWAYS REFER TO YOUR LOCAL BUILDING CODE OFFICIALS PRIOR TO INSTALLING ANY ATLANTIS RAIL SYSTEM to ensure all code and safety requirements are met. Atlantis Rail Systems is not responsible for improper or non-recommended installations.

ATLANTIS RAIL SYSTEMS PROVIDES A VARIETY OF MOUNTING OPTIONS FOR POSTS AND RAILS USED IN OUR SYSTEMS. PRODUCTS OF THIS NATURE REQUIRE THAT MOUNTING SURFACES ARE CONSTRUCTED TO BE CONSIDERED STRUCTURAL PER BUILDING CODE DEFINITION FOR THE SURFACE MATERIAL USED. Structural integrity and building code compliance of mounting surfaces are the responsibility of the end user and/or installer. The use of any of our mounting methods are at the option and decision of the end user and/or installer and should be selected to match the structural material used to create the mounting surface.

INSTALL TIPS

Follow the tips below to ensure a successful installation of your Spectrum Gate!

- **READ THE INSTRUCTIONS** completely before beginning the installation.
- **CHECK CARTON(S)** to determine part count is complete.
- **ALWAYS WEAR PERSONAL PROTECTION EQUIPMENT;** safety glasses, work gloves, etc.
- **DO NOT OVER-TORQUE THE SCREWS.** Avoid stripping the heads of any fasteners.
- **TOUCH-UP ANY SCRATCHES.** After completing the installation of your Spectrum Gate, look for any scratches and/or damage to the powdercoating. These can easily be fixed using our Touch-Up Paint.

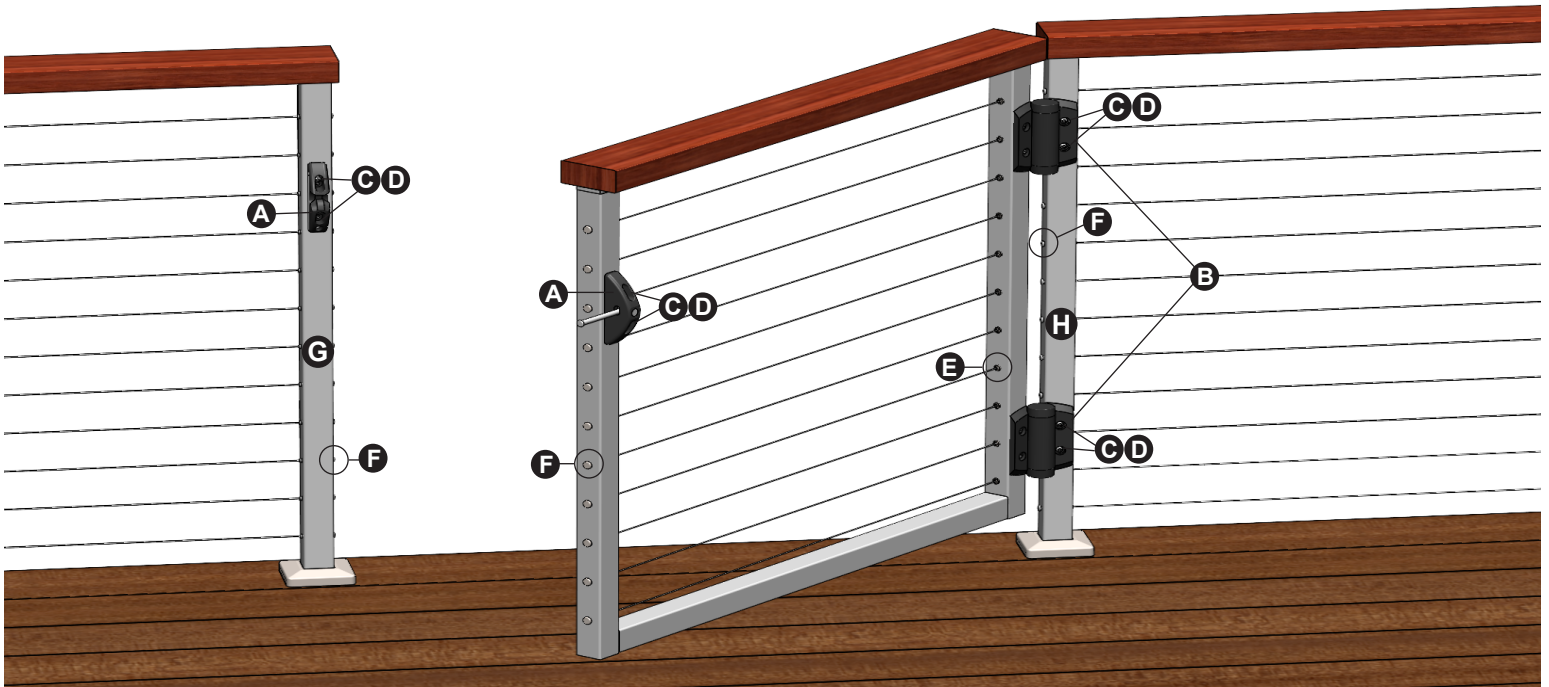
Spectrum Gate Product Specifications

Part Number	Description	Use
Gate Kits		
S0905-GT36-XX*	Spectrum Gate Kit, 36" - Powder-coated 316 SS	Complete gate frame with pre-installed cable
S0905-GT42-XX*	Spectrum Gate Kit, 42" - Powder-coated 316 SS	Complete gate frame with pre-installed cable
Gate Posts		
S0905-LP36-XX*	Spectrum Gate Latch Post, 36" - Powder-coated 316 SS	Use with Spectrum 36" Gate Kit. Drilled for mounting latch hardware
S0905-LP42-XX*	Spectrum Gate Latch Post, 42" - Powder-coated 316 SS	Use with Spectrum 42" Gate Kit. Drilled for mounting latch hardware
S0905-HP36-XX*	Spectrum Gate Hinge Post, 36" - Powder-coated 316 SS	Use with Spectrum 36" Gate Kit. Drilled for mounting hinges
S0905-HP42-XX*	Spectrum Gate Hinge Post, 42" - Powder-coated 316 SS	Use with Spectrum 42" Gate Kit. Drilled for mounting hinges
Gate Mounting Hardware		
S0905-HDG01	Hardware Kit, Spectrum Gate	Complete kit including Hinges, Latch and Mounting Hardware
P0950-0041-2	Hinges, Black (2 Pack) - Polymer/Stainless Steel	Dedicated hinge set for Spectrum Gates and Hinge Posts
P0950-0050	Latch, Black - Polymer/Stainless Steel	Dedicated latch set for Spectrum Gates and Latch Posts
S0909-0538	Button Head Cap Screw, #10-24 UNC x 1.50" - 316 SS	Part of "through post" hardware set for mounting hinges and latch
S0303-BN0513	Barrel Nut, #10-24 UNC x 0.50" - 316 SS	Part of "through post" hardware set for mounting hinges and latch
P0913-0625-XX*	Wood Screw, Pan Head, #10 x 1" - 316 SS	Used to mount top rail to the top of the Spectrum gate frame
Cable Hardware		
S0731-GT03	Gate Tensioner - 316 SS	Used to tension cable assembly
S0731-HG0703	Termination Stud - 316 SS	Fixed end of each cable assembly
S0701-0003	1/8" Wire Rope, 1x19 - 316 SS	Each Spectrum Gate Kit comes with this cable pre-installed
P0905-WA315	Insulating Washer, 1/4"	Use w/ Termination Stud (S0731-HG0703) & Barrel Nut (S0303-BN0513)
P0905-WA330	Insulating Washer, 3/8"	Used when installing the Gate Tensioner (S0731-GT03)

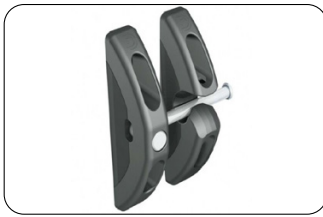
* "XX" in the part number is the color designation. Replace with "BK" for black, "MT" for metallic silver, "WH" for white, "BR" for dark brown or "SP" for special color.

Spectrum Gate Kits OVERVIEW

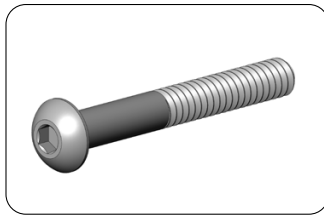
Designed for use with Spectrum Rail Systems. Requires the use of a Spectrum Latch and Hinge Posts.



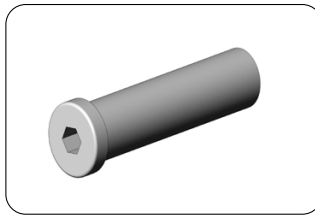
COMPONENTS



A. Gate Latch, Black
(P0950-0050)



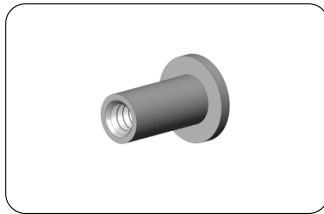
C. Button Head Cap Screw
(S0909-0538)



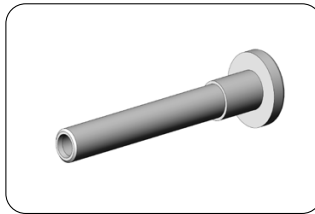
E. Gate Tensioner
(S0731-GT03)



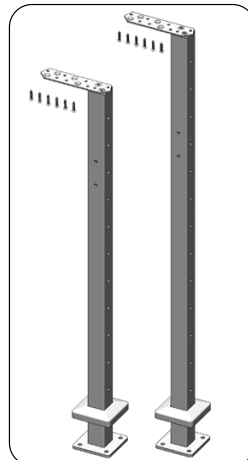
B. Gate Hinges, Black - 2 Pack
(P0950-0041-2)



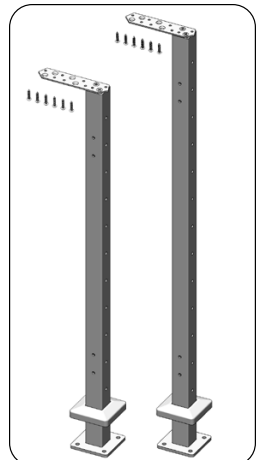
D. Barrel Nut
(S0303-BN0513)



F. Termination Stud
(S0731-HG0703)



G. Spectrum Latch Posts
36" (S0905-LP36-*XX)
42" (S0905-LP42-*XX)

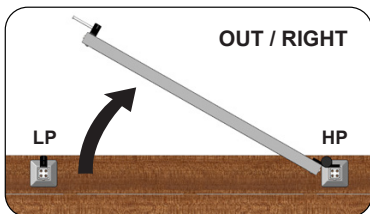


H. Spectrum Hinge Posts
36" (S0905-HP36-*XX)
42" (S0905-HP42-*XX)

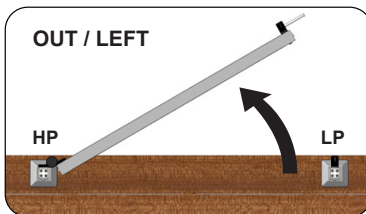
* "XX" in the part number is the color designation. Replace with "BK" for black, "MT" for metallic silver, "WH" for white, "BR" for dark brown or "SP" for special color.

CONFIGURATIONS

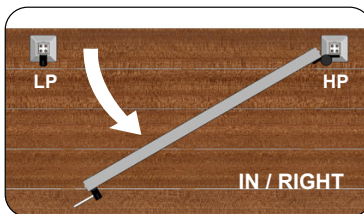
KEY : LP = Latch Post / HP = Hinge Post



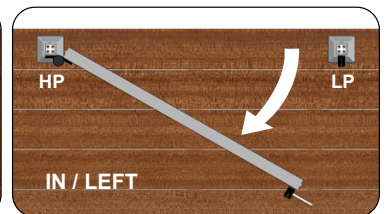
Swings OUT / Hinged RIGHT
Latch Post left, Hinge Post right
and Gate swings outward.



Swings OUT / Hinged LEFT
Hinge Post left, Latch Post right
and Gate swings outward.



Swings IN / Hinged RIGHT
Latch Post left, Hinge Post right
and Gate swings inward.



Swings IN / Hinged LEFT
Hinge Post left, Latch Post right
and Gate swings inward.

INSTALLING THE POSTS

1. Position the Latch and Hinge Posts:

Whether installing a gate on a 36" or 42" Spectrum system, the in-between posts dimension will always be the same. Position the Latch Post and Hinge Post so that they are in line with each other and there is $37\frac{1}{2}"$ in between. See (Fig. A)

2. Confirm the Positioning:

Use a measuring tape and to confirm the position of each post. See (Fig. B)

3. Mark & Pre-Drill:

Once you are sure of the positioning of the posts, mark the hole locations with a pencil and pre-drill using a $\frac{1}{4}"$ drill bit. See (Figs. C & D)

4. Secure the Posts:

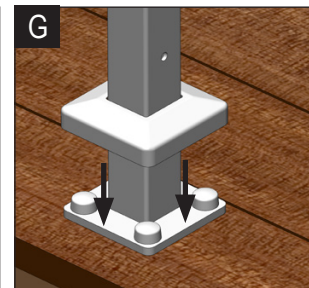
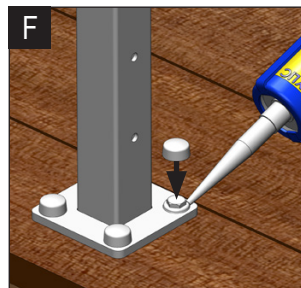
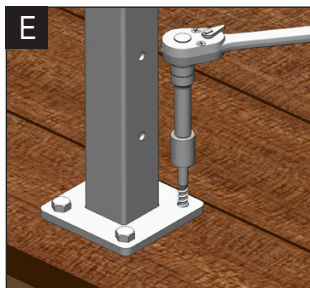
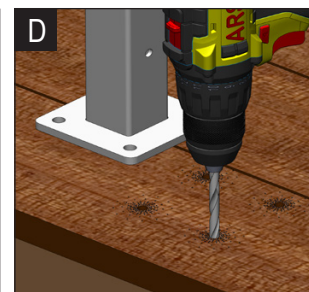
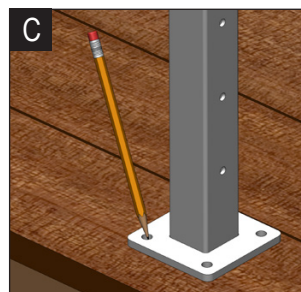
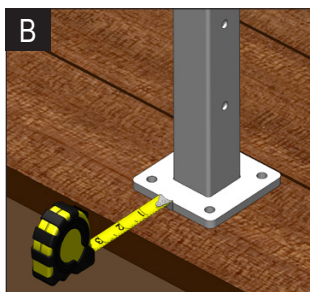
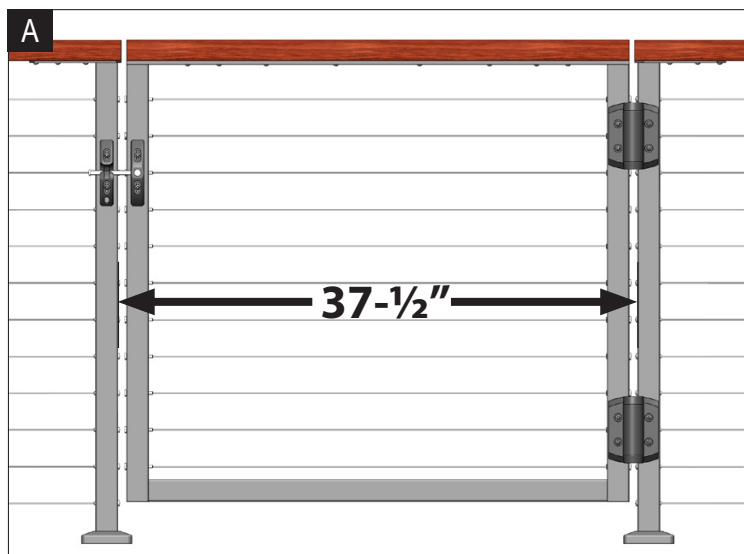
Using the mounting lag screws on your order, install each post securely into place. See (Fig. E)

MAKE SURE POSTS ARE INSTALLED PLUMB!
Adjustments/shimming may be necessary.

Use silicone caulking on each lag screw head and secure caps firmly into place. See (Fig. F)

5. Install the Base Covers:

DON'T FORGET THE BASE COVERS!
See (Fig. G)

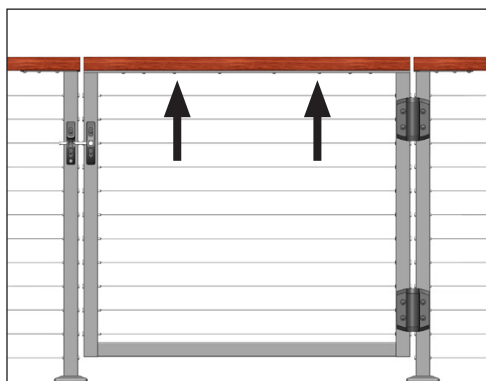


BEFORE YOU CAN ATTACH THE GATE

6. Attach Top Rail on each side of the Gate Opening:

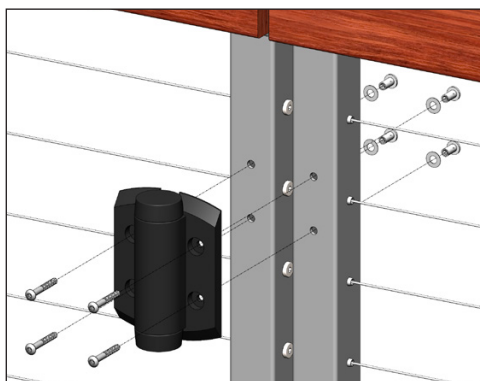
Before you attach the gate kit, the Latch and Hinge Posts must be fully secured to the structure and be fastened to the top rail on each side of the gate opening. The top rail should overhang the post by $\frac{1}{4}"$ in order to cover the post's top mounting plate.

INSTALLING THE TOP RAIL & HARDWARE KIT



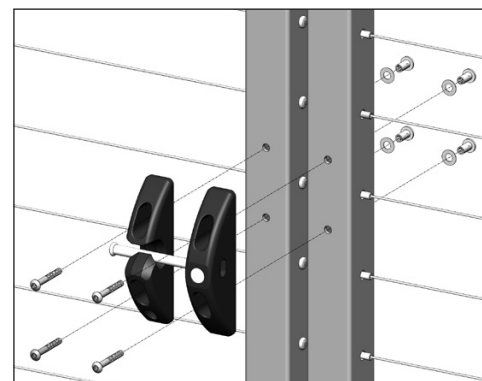
7. Attach the Gate's Top Rail:

Use supplied pan head wood screws to secure your top rail to the Gate Frame. We recommend pre-drilling mounting holes with a $\frac{5}{32}"$ drill bit. Ends of the top rail should be cut flush with sides of the gate.



8. Install Hinges to the Gate Frame:

Attach the gate hinges to the frame being mindful of your desired configuration and the orientation of the hinges. Hinges attach easily using the supplied through-post hardware (cap screws, barrel nuts and $\frac{1}{4}"$ washers).



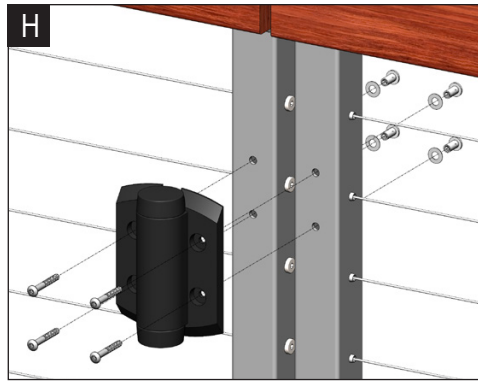
9. Install Latch to the Gate Frame:

Attach the gate latch to the frame being mindful of your desired configuration and the orientation of the latch. Attach using the supplied through-post hardware (cap screws, barrel nuts and $\frac{1}{4}"$ washers).

INSTALLING THE GATE

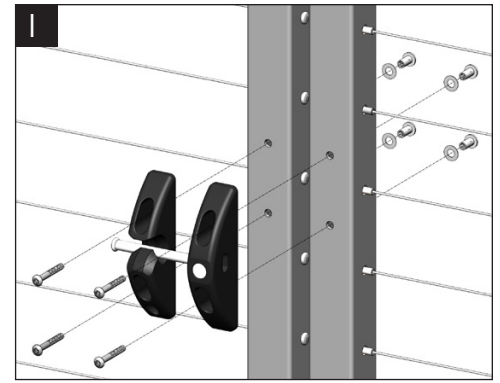
10. Attach Hinges to the Hinge Post:

With the assistance of a helper (or wood blocks placed under the gate to bring it to the correct height), attach the hinges to the hinge posts using the cap screws, barrel nuts and 1/4" washers. (See Fig. H)



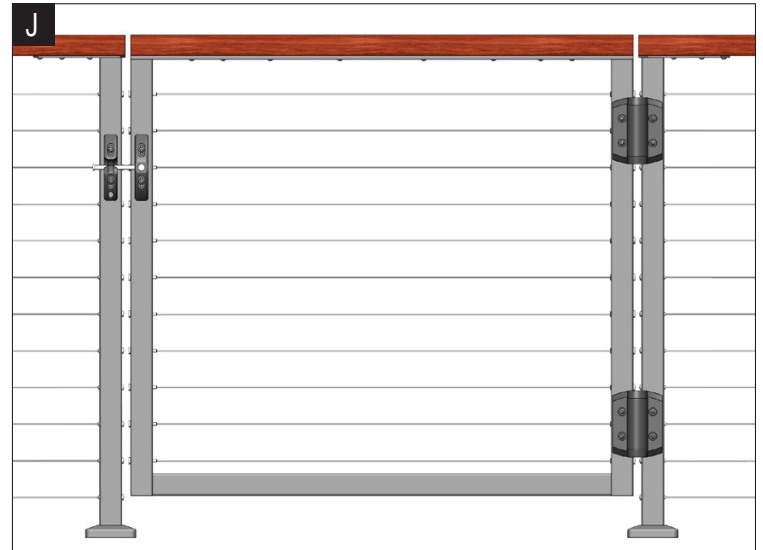
11. Attach Latch Receiver to the Latch Post:

Using the supplied cap screws, barrel nuts and 1/4" washers, attach the latch component that receives the gate latch onto the Latch post. Make sure the metal latch rests properly in the contour of the receiver. (See Fig. I)



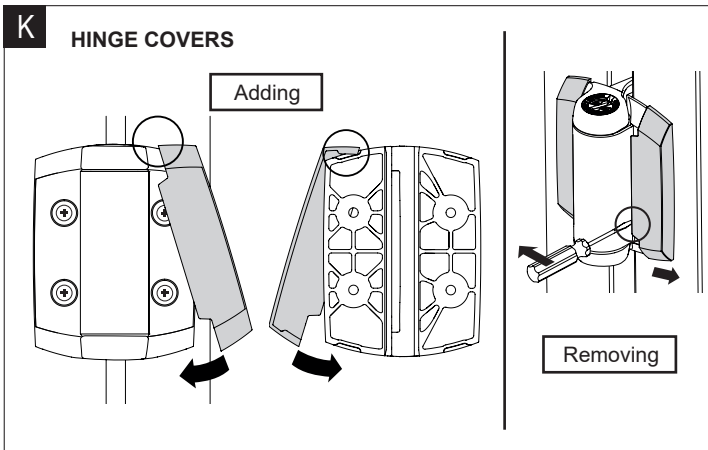
12. Test the Gate:

Does the gate open and close correctly?
And is the gap in between the gate and the posts consistent?
(See Fig. J)
If not, make any necessary adjustments.



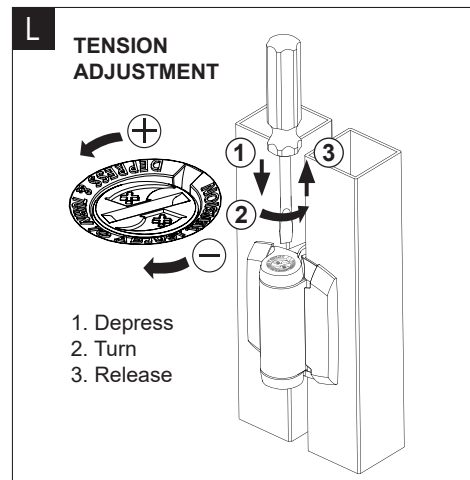
13. Install the Plastic Covers onto the Hinges:

For a clean look, install the black plastic covers that come with the hinge set to cover/hide the mounting screws. See (Fig. K)



14. Adjust the Tension of the Hinges:

The gate hinges are designed to "self-close" under tension. To achieve the desired tension, use a flat head screwdriver to adjust the hinge. Depress the adjustment dial and turn counter clockwise to increase the tension. To reduce the amount of tension, turn the dial clockwise. See (Fig. L)



15. IMPORTANT NOTE:

Termination Studs MUST be used on Hinge and Latch Posts
For proper clearance of gate, you must use Termination Studs on the end of cables installed at the Latch and Hinge Posts. See (Fig. M). The Termination Studs are offered in the following: 2 packs (C0731-HG0703-2) and 10 packs (C0731-HG0703-10). Use the 1/4" Insulating Washers (P0905-WA315) in between the head of each Termination Stud and the post to prevent damage to the powdercoat finish of each post.

The Spectrum Gate Installation is **COMPLETE!**

