

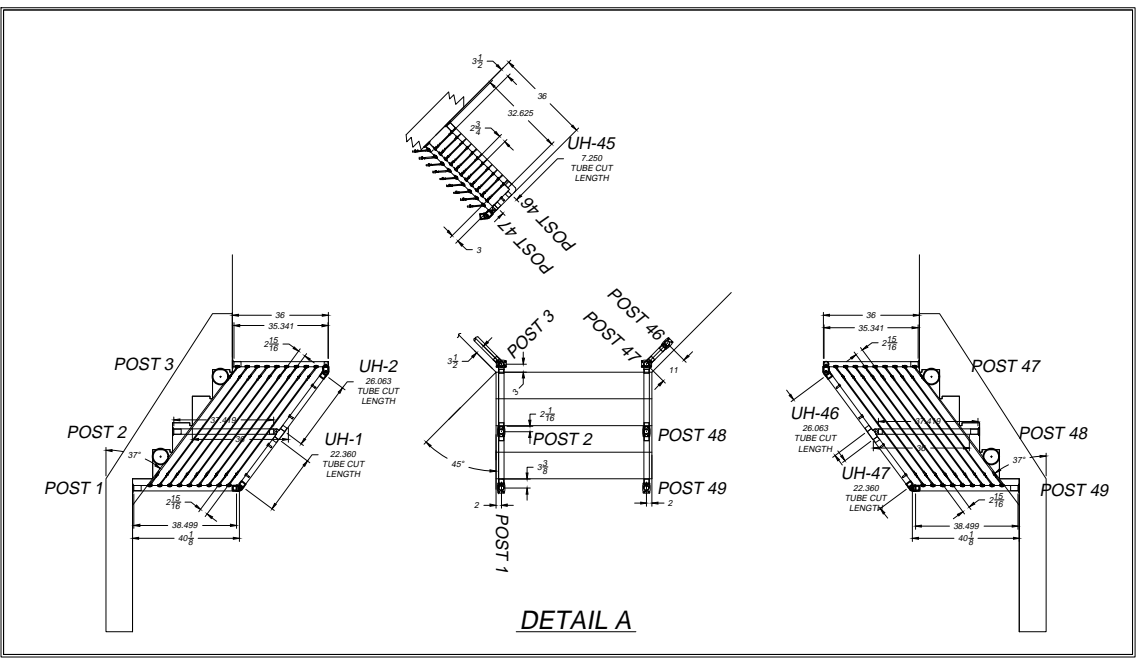
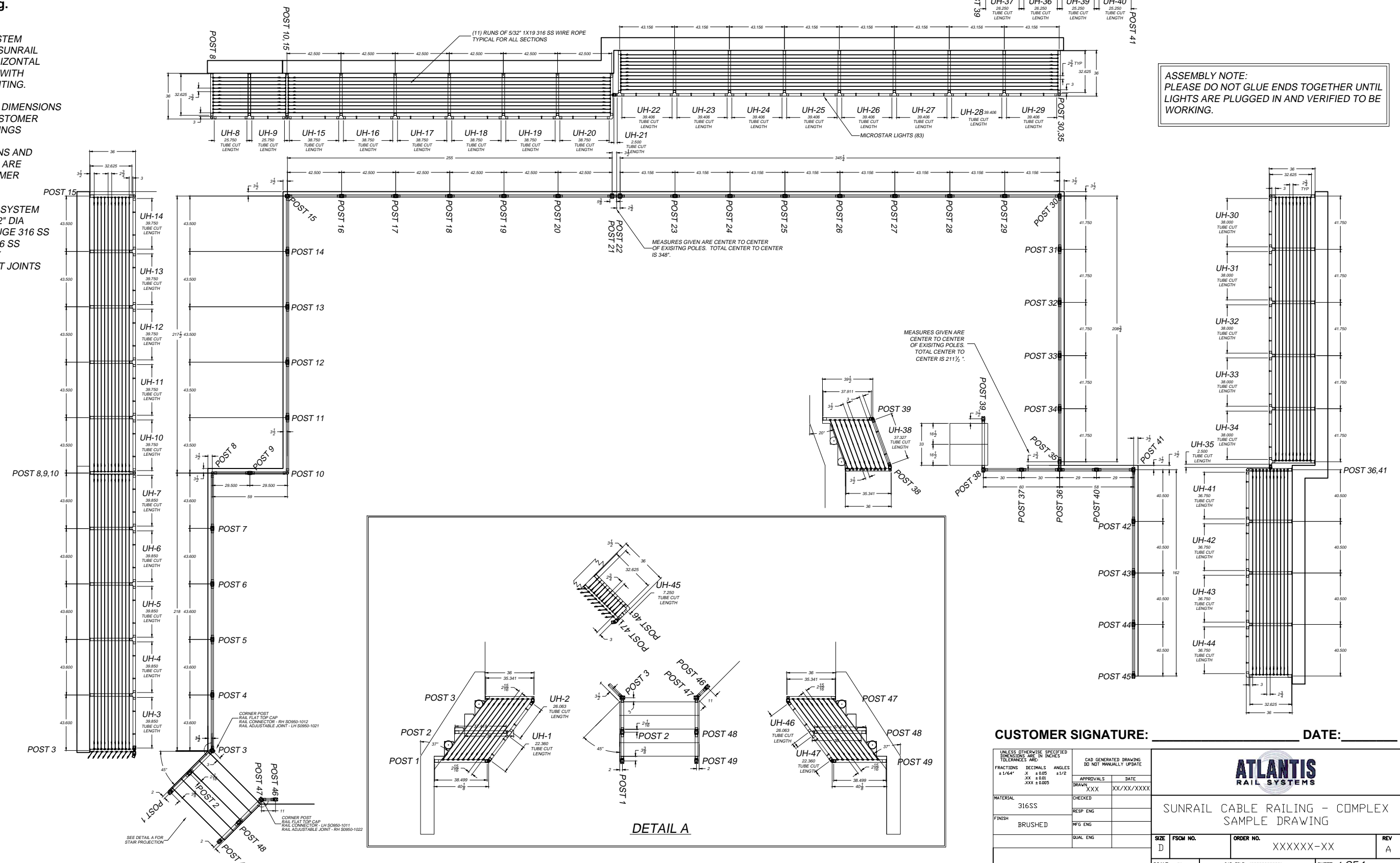
THE INFORMATION CONTAINED IN THIS DRAWING IS THE SOLE PROPERTY OF SUNCOR STAINLESS. ANY REPRODUCTION IN PART OR WHOLE WITHOUT THE WRITTEN PERMISSION OF SUNCOR STAINLESS IS PROHIBITED.

REVISIONS			
REV	DESCRIPTION	DATE	APPROVED
A	SAMPLE DRAWING	XX/XX/XXXX	XXX

Deck or mounting area and stair dimensions **MUST** be confirmed by the customer and or contractor. Suncor/Atlantis Rail will **NOT** be responsible for errors or misinterpretations of the railing system designed by us based upon customer confirmed dimensions. Additional drawing time to change the design or correct for errors after signing will result in additional costs as well as any changes to parts made per the drawing. Carefully review the drawing before signing and accepting.

- NOTES:
- HAND RAIL SYSTEM CONSISTING OF SUNRAIL STYLE WITH HORIZONTAL WIRE ROPE AND WITH MICROSTAR LIGHTING.
 - DRAWING AND DIMENSIONS BASED UPON CUSTOMER SUPPLIED DRAWINGS
 - ALL DIMENSIONS AND RAILING DETAILS ARE PENDING CUSTOMER APPROVAL
 - 36" HAND RAIL SYSTEM CONSISTING OF 2" DIA BRUSHED 16 GAUGE 316 SS TUBING, CAST 316 SS FITTINGS, EPOXY CONNECTIONS AT JOINTS

ASSEMBLY NOTE:
PLEASE DO NOT GLUE ENDS TOGETHER UNTIL LIGHTS ARE PLUGGED IN AND VERIFIED TO BE WORKING.



CUSTOMER SIGNATURE: _____ DATE: _____

UNLESS OTHERWISE SPECIFIED DIMENSIONS ARE IN INCHES TOLERANCES ARE:		CAD GENERATED DRAWING DO NOT MANUALLY UPDATE	
FRACTIONS	DECIMALS	ANGLES	
± 1/64"	± 0.005	± 1/2°	
MATERIAL		APPROVALS	DATE
316SS		DRAWN XXX	XX/XX/XXXX
FINISH		CHECKED	
BRUSHED		RESP ENG	
		MFG ENG	
		QUAL ENG	
SIZE	FSCM NO.	ORDER NO.	REV
D		XXXXXX-XX	A
SCALE	NTS	CAD FILE: xxxxxxxxxxxx	SHEET 1 OF 1



SUNRAIL CABLE RAILING - COMPLEX SAMPLE DRAWING