



**ATLANTIS RAIL** Contact Information:

Atlantis Rail Systems

70 Armstrong Road  
Plymouth, MA 02360

3900 Civic Center Drive  
North Las Vegas, NV 89030

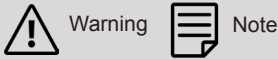
(800) 541-6829 or (508) 732-9191

(508) 732-9798

www.atlantisrail.com

**Table of Contents**

<b>Tools</b>	<b>1</b>
<b>Tips for a Successful Installation</b>	<b>1</b>
<b>Micro Star Components</b>	<b>2</b>
<b>Installing the Micro Star LED Lighting</b>	<b>2</b>
<b>Micro Star Specifications</b>	<b>4</b>
<b>Micro Star Product Specifications</b>	<b>4</b>



**Micro Star™ Installation Instructions for SunRail™ Systems**

The Micro Star LED Light is the smallest self-contained LED on the market. These LED lights are available in 12v and each draws only .02 amps. Being completely waterproof and encased in a type 316 stainless steel housing, these lights are able to stand up to the most demanding environments. The Micro Star LED Light is both a functional and creative lighting alternative.

The following guide will take you step-by-step through the process of installing Micro Star LED lights on a SunRail system.

**Tools**

**Required & Recommended**



Gloves



Safety Glasses

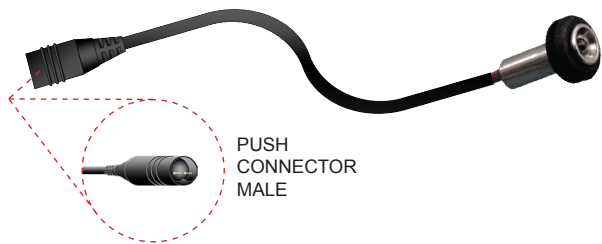
**Tips for a Successful Installation**

- Read the instructions completely before beginning the installation.
- Check carton(s) to determine part count is complete.



**ALWAYS USE WORK GLOVES AND WEAR SAFETY GLASSES TO PROTECT YOUR HANDS AND EYES.**

## Micro Star Components



S0801-PC01

Micro Star LED Light with Push Connector (Male)



S0832-0001  
S0825-TF160

Micro Star Transformer (1 amp)  
Transformer (Screw Lugs) to Wiring Harness (1 amp)



S0832-0005  
S0825-TW560

Micro Star Transformer (5 amps)  
Transformer to Wiring Harness (5 amps)



S0825-JMPR-SC Micro Star Jumper (12")

## Installing Micro Star LED Lighting

### Micro Star LED Lighting

The Atlantis Railing Micro Star LED light is the smallest self-contained LED on the market (See *Figure A*) and come pre-installed in the top rails.

### Install the Transformer

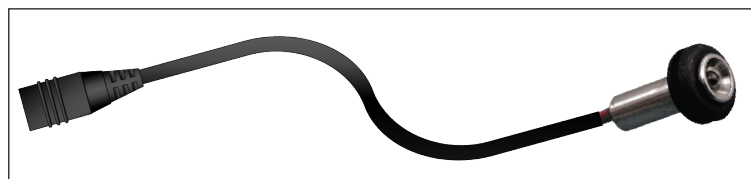
Mount the Micro Star transformer near a 110v, power outlet but leave transformer unplugged until it is needed (See *Figure B*). Select the end post closest to the outlet in order to connect to the transformer. You will need to run the low voltage wire down this post so plan accordingly. You may need to drill an additional hole in the decking beneath this post to run the low-voltage wire to keep it hidden. The transformers are available in 1 amp and 5 amps models.



**USE DC TRANSFORMER ONLY!**

### Install the Jumpers

Run supplied Micro Star Jumpers (S0825-JMPR-SC) between all fittings. This includes tees, elbows and 3-way corners. Adjustable fittings and dovetails should already have jumpers installed for your convenience.



*Figure A.* Micro Star LED light with Push Connector (Female).



*Figure B.* DC transformers are comprised of heavy-duty water resistant material.

### Connect Rails with Screw Connectors

Beginning with the end post closest to the transformer, connect rails sequentially with the screw connector male / female (See Figure C). Install rails as they are connected according to the applicable SunRail system installation instructions.

### Connect Micro Star LED Lights with Push Connectors

Atlantis Rail pre-installs Micro Star lights and wiring in the rails before shipping to a customer. If a connection comes undone reconnect the push connectors male / female (See Figure D).



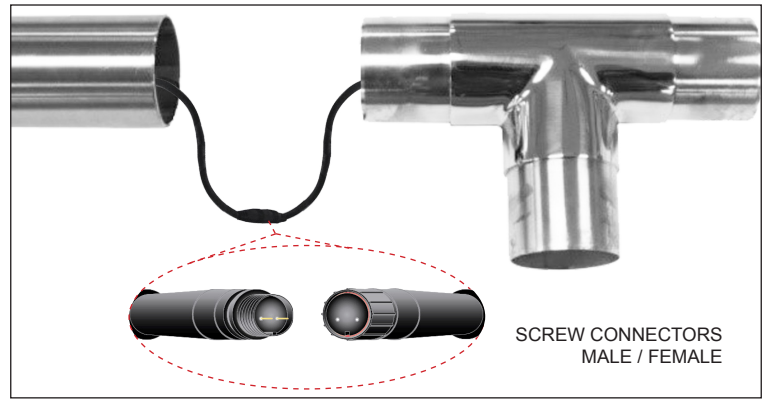
*ATLANTIS RAIL CHECKS EACH LIGHT IN OUR SHOP TO BE SURE THAT IT IS FUNCTIONING ACCORDING TO SPECIFICATIONS. HOWEVER, IT IS A GOOD IDEA TO CHECK THE LIGHTS ON-SITE TO BE SURE THAT NO WIRING CAME LOOSE IN TRANSIT.*



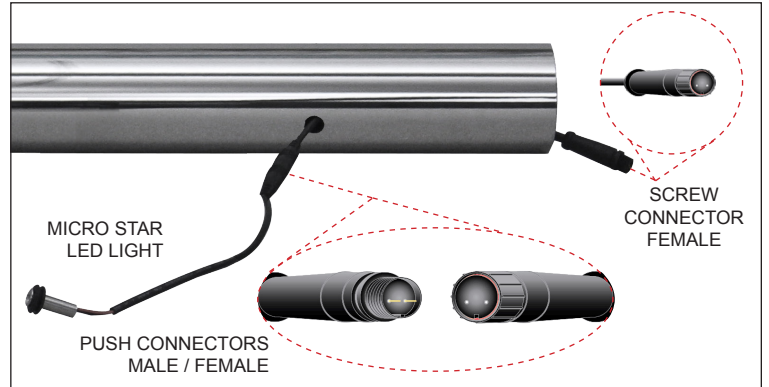
*DO NOT EXCEED 5 AMPS FOR A POWER SOURCE. DO NOT USE AN AUTOMOTIVE, MARINE OR MOWER BATTERY AS THIS MAY DAMAGE THE WIRING. BEFORE APPLYING LOCTITE THREADLOCKER BLUE 242 BRAND ADHESIVE TO FITTINGS AND TUBING, BE SURE TO TEST EACH CONNECTION ON BOTH ENDS OF THE TUBE. IF ANY ADDITIONAL WIRING AND CONNECTIONS ARE REQUIRED, WIRE USING A "PARALLEL" CIRCUIT. USING A "SERIES" CIRCUIT IS NOT RECOMMENDED.*



*12 VOLT DC POWER SOURCE ONLY. MICRO STAR LED LIGHTS ARE USED WITH DIRECT CURRENT TRANSFORMERS ONLY. USING AN ALTERNATING CURRENT TRANSFORMER OR A TRANSFORMER OVER 12 VOLTS WILL CANCEL ALL WARRANTY CLAIMS AND CAUSE THE LIGHTS TO BURN OUT PREMATURELY.*



**Figure C.** Run supplied jumper wires between all fittings, including tees, elbows and 3-way corners. Adjustable fittings and dovetails should already have jumpers installed for your convenience.



**Figure D.** Atlantis Rail pre-installs Micro Star lights and wiring in the rails before shipping to a customer.

## Micro Star Specifications

The patented Micro Star series is a complete line of lighting options for railings, fencing, steps and many other indoor or outdoor applications. The Micro Star LED Lights are available in 12v and each draws only .02 amps.

## Micro Star Product Specifications

### Components

Product	Description	Dimensions	Fasteners	Notes
S0832-0001	Micro Star Transformer - 1 amp	100-240Vac - 50/60HZ	--	--
S0832-0005	Micro Star Transformer - 5 amps	100-240Vac - 50/60HZ	--	--
S0801-PC01	Micro Star LED Light with Push Connector	12 Volt DC	Push Connector (Male)	Color: White
S0825-H048	Micro Star Wire Harness	4' Handrail	Screw Connectors (M/F) Push Connector (Female)	Factory pre-installed
S0825-H060	Micro Star Wire Harness	5' Handrail	Screw Connectors (M/F) Push Connector (Female)	Factory pre-installed
S0825-3000-PT	Micro Star 3-Way Branch	12"	Push Connectors (M/F)	--
S0825-3000-SC	Micro Star 3-Way Branch	12"	Screw Connectors (M/F)	--
S0825-JMPR-SC	Micro Star Jumper	12"	Screw Connectors (M/F)	--
S0825-EX60-PT	Micro Star Extension	5'	Push Connectors (M/F)	--
S0825-EX60-SC	Micro Star Extension	5'	Screw Connectors (M/F)	--
S0825-EX300-SC	Micro Star Extension	25'	Screw Connectors (M/F)	--
S0825-TF160	Micro Star Transformer to Wiring Harness	66"	Screw Connector (Female)	1 amp
S0825-TW560	Micro Star Transformer to Wiring Harness	64"	Screw Connector (Female)	5 amps

**IP61:** Screw and Push Connectors are protected from total dust ingress and from condensation.