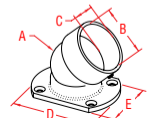
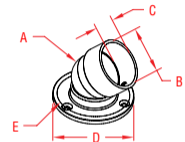


RAILEASY™ ADJUSTABLE SIDEMOUNT

316L STAINLESS STEEL



C0976-0301-2



ITEM	SIZE	A	B	C	D	E	FAST.	WT
------	------	---	---	---	---	---	-------	----

(lb)

POLISHED - 2 PACK

C0976-0002	2"	2.00"	2.01"	1.00"	3.50"	2.88"	#10	3.13
-------------------	-----------	-------	-------	-------	-------	-------	-----	------

BRUSHED

S0976-0000-B	2"	2.00"	2.01"	1.00"	3.50"	2.88"	#10	1.46
---------------------	-----------	-------	-------	-------	-------	-------	-----	------

OVAL POLISHED - 2 PACK

C0976-0301-2	2"	2.00"	2.01"	1.00"	3.50"	2.50"	#10	3.13
---------------------	-----------	-------	-------	-------	-------	-------	-----	------

NOTE: Patented design can accept any angle up to 45 degrees in one of four directions, while keeping the perpendicular directions immovable.

Tube is placed inside mount, therefore the ends can be cut on-site; no precision cutting is required. Set screws are included to lock tubing and to prevent turning. Fasteners are included in the 2 pack.

