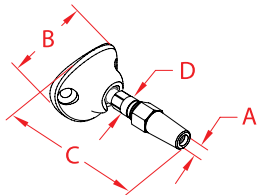


RAILEASY™ SWIVEL END-ROUND

316L STAINLESS STEEL



ITEM

A

B

C

D

FAST

WT

(cable)

(lb)

S0982-S004

5/32"

1.50"

2.30"

0.31"

3/16" Rivet

0.13

NOTE:

Patented swivel end is used for cable railing applications. Swivel end is used in conjunction with RailEasy™ Tensioner (S0982-0004) in order to tension cable. Slotted base allows for angles up to 45 degrees and round shape is designed for use with 2" outside diameter stainless tubing. Requires rivets to attach to tubing (supplied with complete SunRail™ systems).

