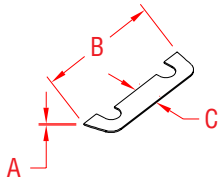


RAIL BASE- END SHIM

316 STAINLESS STEEL



ITEM

A

B

C

WT

(lb)

S0950-EH04

0.03"

2.75"

0.50"

0.01

NOTE:

End shim is used under the end of a rail mounting base (S0950-0001, S0950-0003 or S0940-1005) if mounting surface is uneven. The end shim is designed to have the same profile as the end of rail base for a seamless appearance.