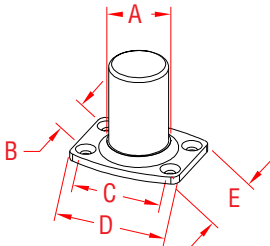


# RAIL MOUNTING BASE

**316 STAINLESS STEEL**



| ITEM | SIZE | A | B | C | D | E | WT |
|------|------|---|---|---|---|---|----|
|------|------|---|---|---|---|---|----|

(lb)

**POLISHED**

**S0950-0001**

2"

1.88"

1.60"

2.91"

3.75"

3.00"

1.20

**BRUSHED**

**S0950-0001-B**

2"

1.88"

1.60"

2.91"

3.75"

3.00"

1.20

**NOTE:**

**The strongest base available; can be used both ways, either the long or the short side in front. Applied to an uneven surface, it can be levelled with one or more full or partial shims. Base contains through-hole for electrical wiring.**

**Once the stanchion tube is placed over this base, the joint is nearly invisible due to the blending radius. Requires rail adhesive (supplied with complete systems) to bond with tubing.**

