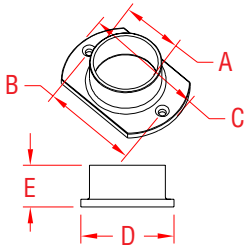


# RAIL BASE PLATE - OVAL

**316 STAINLESS STEEL**



**ITEM**

**SIZE**

**A**

**B**

**C**

**D**

**E**

**WT**

(lb)

***POLISHED***

**S0902-0301**

2"

2.02"

3.04"

4.00"

2.75"

1.23"

0.54

***BRUSHED***

**S0902-0301-B**

2"

2.02"

3.04"

4.00"

2.75"

1.23"

0.54

***NOTE:***

***Tube is placed inside mount, therefore the ends can be cut on-site; no precision cutting is required. Set screw is included to lock tubing and to prevent turning.***