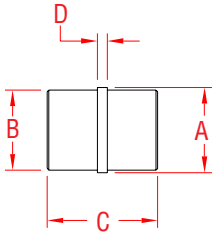


RAIL CONNECTOR

316 STAINLESS STEEL



ITEM	SIZE	A	B	C	D	WT
------	------	---	---	---	---	----

(lb)

POLISHED

S0901-0104	1-1/2"	1.50"	1.38"	2.06"	0.06"	0.20
S0902-0104	2"	2.00"	1.88"	3.25"	0.25"	0.40

BRUSHED

S0901-0104-B	1-1/2"	1.50"	1.38"	2.06"	0.06"	0.20
S0902-0104-B	2"	2.00"	1.88"	3.25"	0.25"	0.40

NOTE:

Used as an insert between two lengths of tubes to connect and strengthen the joint. Applications include long runs of handrail used with Part# S0902-0305 or S0902-0401. Requires rail adhesive (supplied with complete systems) to bond with tubing.