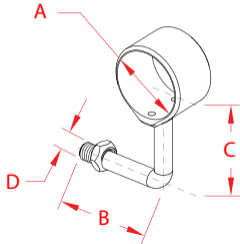


RAIL MID SUPPORT

316 STAINLESS STEEL



ITEM	SIZE	A	B	C	D	WT
						(lb)
S0901-0401	1-1/2"	1.51"	3.00"	3.09"	0.50"	0.50
S0902-0401	2"	2.01"	3.00"	3.38"	0.50"	0.60

NOTE:

Patented mid support designed for continuous handrail to pass through. Use rail mid support with either the rail support "flat base" or "2 inch tube mount base" (above), depending on application. Length of tubing can be joined inside by adding a connector, making the joint invisible. 360 degree adjustable handrail support includes lock nut and two set screws to prevent movement of handrail.

