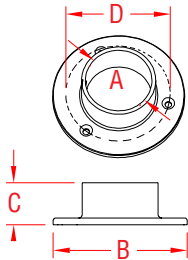


RAIL BASE PLATE - ROUND

316 STAINLESS STEEL



ITEM	SIZE	A	B	C	D	FAST	WT
------	------	---	---	---	---	------	----

(lb)

POLISHED

S0901-0303

1-1/2"

1.52"

2.93"

1.09"

2.36"

#10

0.42

BRUSHED

S0901-0303-B

1-1/2"

1.52"

2.93"

1.09"

2.36"

#10

0.42

NOTE:

Tube is placed inside mount, therefore the ends can be cut on-site; no precision cutting is required. Set screw is included to lock tubing and to prevent turning.