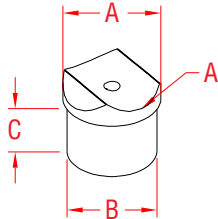


# RAIL TEE CONNECTOR

316 STAINLESS STEEL



ITEM

SIZE

A

B

C

WT

(lb)

**POLISHED**

**S0901-0107**

1-1/2"

1.50"

1.38"

1.00"

0.18

**BRUSHED**

**S0901-0107-B**

1-1/2"

1.50"

1.38"

1.00"

0.18

**NOTE:**

***This rail fitting allows the connection of a 1-1/2" continuous top rail to a 2" tubular post at any desired location. Special shaped base allows connectors to be abutting as close as 90 degrees to each other.***

***Requires fastener or rivet to attach connector to 2" tube and rail adhesive (supplied with complete systems) to bond with tubing.***