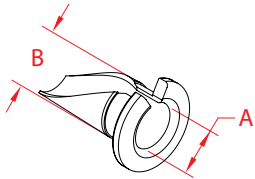


# SPECTRUM & NOVA SYSTEM CABLE GROMMETS

PLASTIC



ITEM

A

B

QTY

WT

(cable/stud)

(hole)

(lb)

**25 PACK**

**C0916-0003-25**

1/8"

17/64"

25

0.03

**C0916-B003-25**

1/4"

17/64"

25

0.02

**NOTE:**

**Use with Spectrum or NOVA System. Snaps onto cable and slides into hole/onto HandiSwage™ Stud for a snug fit. Grommets prevent movement and deflection of cable and reduce dirt and moisture from getting inside the post and onto the cable or stud.**