



ATLANTIS RAIL Contact Information:

Atlantis Rail Systems

70 Armstrong Road
Plymouth, MA 02360

3900 Civic Center Drive
North Las Vegas, NV 89030

(800) 541-6829 or (508) 732-9191

(508) 732-9798

www.atlantisrail.com

RailEasy™ Glass Installation Instructions

The RailEasy Glass System includes pre-attached glass clamps set into a stainless steel top and bottom rail for a perfect barrier against the wind without compromising the view.

The following guide will take you step-by-step through the process of installing your RailEasy Glass System. Along the way, we'll offer you tips and tricks to help you get your railing installed today and ready for tomorrow.



**ATLANTIS RAIL PROVIDES THE RAILINGS ONLY.
ATLANTIS RAIL DOES NOT OFFER GLASS PANELS
AS PART OF THE RAIL EASY GLASS SYSTEM.**



Warning



Note

Table of Contents

Tools	1
Tips for a Successful Installation	2
RailEasy Glass System Components	2
Additional Components	2
Preparation	3
Straight Section - Installing the Rails & Glass	3
Stair & Ramp Section - Installing the Rails & Glass	5
Additional Components	6
RailEasy Glass System Specifications	8
RailEasy Glass Product Specifications	8

Tools

Required & Recommended



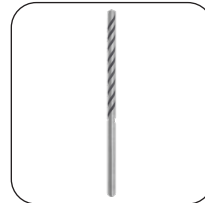
Power Drill



Tape Measure



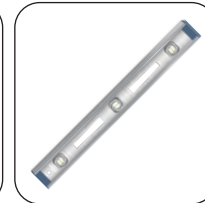
Safety Glasses



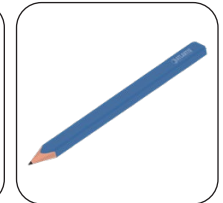
1/8" Drill Bit



Carpenters Square



Level



Pencil



Gloves



3mm, 4mm &
8mm (5/16")
Allen Wrenches

Tips for a Successful Installation

- Read the instructions completely before beginning the installation.
- Plan your railing project. Sketch your project with the actual measurements of your deck or balcony complete with post locations.
- Check carton(s) to determine part count is complete.
- Installation is best accomplished with two (2) people.
- Always wear personal protection equipment; safety glasses, work gloves, etc.
- Use care not to over-torque the screws. Pre-drilling is recommended.



ATLANTIS RAIL SYSTEMS PROVIDES A VARIETY OF MOUNTING OPTIONS FOR POSTS AND RAILS USED IN OUR SYSTEMS. PRODUCTS OF THIS NATURE REQUIRE THAT MOUNTING SURFACES ARE CONSTRUCTED TO BE CONSIDERED STRUCTURAL PER BUILDING CODE DEFINITION FOR THE SURFACE MATERIAL USED. STRUCTURAL INTEGRITY AND BUILDING CODE COMPLIANCE OF MOUNTING SURFACES ARE THE RESPONSIBILITY OF THE END USER AND / OR INSTALLER. THE USE OF ANY OF OUR MOUNTING METHODS ARE AT THE OPTION AND DECISION OF THE END USER AND / OR INSTALLER AND SHOULD BE SELECTED TO MATCH THE STRUCTURAL MATERIAL USED TO CREATE THE MOUNTING SURFACE.



STORE YOUR ORDER INDOORS TO KEEP DRY!
Some items in your order have been shrink wrapped with a protective poly film. Avoid exposing these items to harsh weather and moisture to avoid damaging powder coated surfaces. When you're ready to install product, remove the protective shrink wrap before or immediately after installation.



ALWAYS REFER TO YOUR LOCAL BUILDING CODE OFFICIALS PRIOR TO INSTALLING ANY ATLANTIS RAIL SYSTEM TO ENSURE ALL CODE AND SAFETY REQUIREMENTS ARE MET. ATLANTIS RAIL SYSTEMS IS NOT RESPONSIBLE FOR IMPROPER OR NON-RECOMMENDED INSTALLATIONS.

RailEasy Glass System Components



S0950-0010*

Glass Panel Connector - 3/8"

* Included in glass panel kits below.



C0925-1200

RailEasy Glass Panel Kit - 2" x 48"

C0925-1500

RailEasy Glass Panel Kit - 2" x 60"

C0925-1800

RailEasy Glass Panel Kit - 2" x 72"



C0975-0002

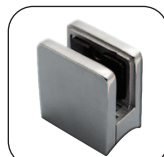
RailEasy Straight Sidemount - 2" - 2 Pack



C0976-0002

RailEasy Adjustable Sidemount - 2" - 2 Pack

Additional Components



Glass Panel Connector - 1/2"



Glass Panel Connector - Flat



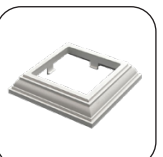
Glass Panel Base



Micro Star™ LED Post Cap*



RailEasy Colonial Post Cap



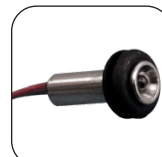
RailEasy Colonial Post Base



RailEasy Sleeve



Micro Star Transformers



Micro Star™ LED Light*

* Micro Star LED lights can be integrated into the top rail for sublet illumination.

Preparation

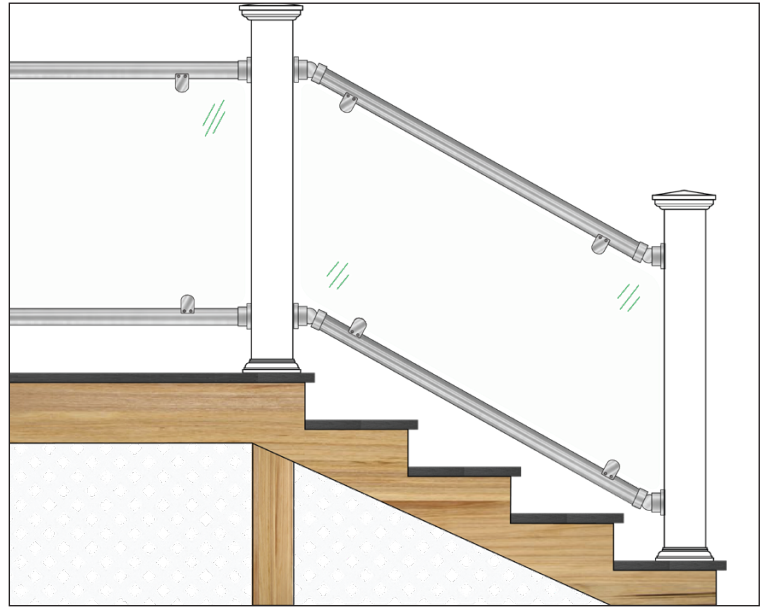
Rail Lay Out

If you requested Atlantis Rail to make custom top and bottom rails to your supplied dimensions, we will subtract 1/2" from each length to allow for mounting hardware. Your cut railings will be labeled with the actual cut size (your measurement less 1/2"). If there is additional work requiring engineering calculations, your rails will be labeled with a rail number. These additional calculations will usually be limited to Micro Star™ light installation. If labeled per an engineered drawing, your labels will run from one specific end with top rail labeled UH-1 etc. and bottom rail labeled LH-1 etc. Stock length rails follow your own determined order and are cut in the field per your measurements.

Locate & Check the Parts of Your Rail System

When your rail system arrives on site, take the time to make sure that all the parts you were supposed to receive are present and undamaged. Report any inconsistencies with your build products supplier or your Atlantis Rail Sales Representative as soon as you are aware of the issue.

Lay out your rails and posts on the appropriate deck. Open the boxes of fittings and lay the appropriate fittings out along with the rails. When all the parts are laid out and accounted for, you are ready to begin.



Straight Section - Installing the Rails & Glass



IF INSTALLING THE MICRO STAR LED LIGHTING, PLEASE REFER TO THE MICRO STAR INSTALLATION INSTRUCTIONS FOR RAILEASEY SYSTEMS.

Find the Center of the Top & Bottom Rails

Begin with the straight sections, saving the stairs for last. Use a square and a tape measure to mark the center of the first post. Make a vertical center line running the length of the post. For 36" systems, measure 35" from the mounting surface and mark a horizontal line on the post at this height. Measure 41" from the mounting surface for 42" systems. The intersection of these lines is the center point for your top rail (See Figure A). To install the bottom rail, repeat at the desired lower rail height.



SOUTHERN BUILDING CODES REQUIRE A BOTTOM RAIL SPACING OF NO MORE THAN 2".

Using the straight sidemount fitting (part # C0975-0002) center the hole on the mark made in the previous step. Carefully mark the center of the three (3) screw holes (See Figure B). Remove the sidemount fitting and pre-drill using a 1/8" drill bit.

Install Lower Rail

Loosen the set screw on the bottom of the sidemount fitting using the 3 mm Allen wrench and position the sidemount fitting on either end of the appropriate rail with the flange facing outward. Set the rotation of the rail so that the Glass Panel Connectors are pointing upward (See Figure C).

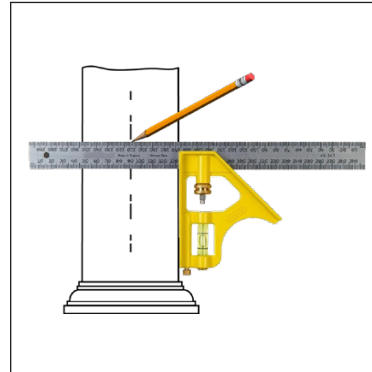


Figure A. (Left) Use a square and tape measure to mark the center of your posts.

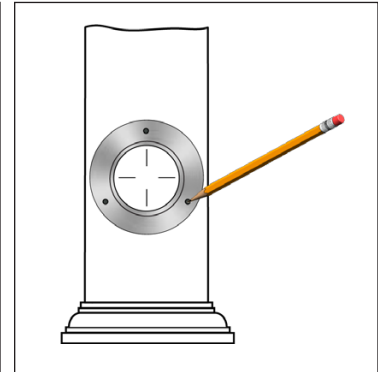


Figure B. (Right) Center the sidemount hole and mark the 3 screw holes.

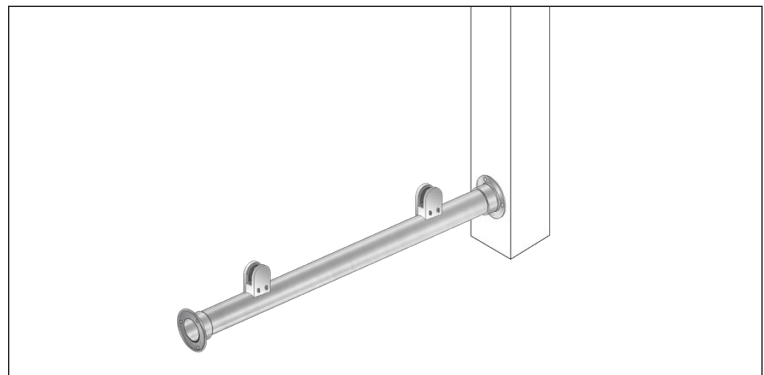


Figure C. Position the sidemount fittings on the rail with the flange facing outward and the Glass Panel Connectors pointing upward.

Position the sidemount fitting on the post and install using three (3) #10 x 1-1/2" screws (supplied). With one (1) sidemount installed, position the other fitting against the opposite post. Move it up and down until level. When level mark and pre-drill holes as before. Install sidemount in place and recheck for level (See *Figure D*).

Now, slide the lower rail (now installed with sidemounts on both sides) back and forth between the sidemount fittings until the Glass Panel Connectors are centered between posts and plumb (vertical). When centered and aligned properly, tighten down the set screws using the 3mm Allen wrench to prevent the lower rail from rotating or sliding in either direction.



ALWAYS USE WORK GLOVES AND WEAR SAFETY GLASSES TO PROTECT YOUR HANDS AND EYES WHILE OPERATING POWER TOOLS.

Install Upper Rail

As before, loosen the set screw on the bottom of the sidemount fitting and position the sidemount fitting on either end of the appropriate upper rail with the flange facing outward. Hand tighten the set screw on the bottom of the sidemount fitting to prevent from slipping. Set the upper rail to the side.

Now, loosen the side of each Glass Panel Connector on the lower and upper rails using a 4mm Allen wrench and remove the plastic pin to allow for the glass panel to be temporarily inserted (See *Figure E*).



THE PLASTIC PIN IS NOT A STRUCTURAL FEATURE. REMOVE AND DISCARD.

With a partner insert the glass panel into the bottom rail Glass Panel Connectors and ensure it is snug against the bottom lip of the Glass Panel Connector. While holding the glass panel securely and level, have your partner push the upper rail gently down onto the glass infill ensuring the Glass Panel Connectors are facing downward and the plastic pins have been removed (See *Figure F*).

With a pencil, mark the three (3) holes of each sidemount fitting attached to the upper rail on each post. Remove the upper rail and set aside. Carefully remove the glass panel infill and set aside. Pre-drill holes as before. Position the upper rail with sidemount fittings on the post and install using three (3) #10 x 1-1/2" screws (supplied). Position the other sidemount fitting on the other post and lay flush against it. Double check level and install using three (3) #10 x 1-1/2" screws (supplied).

Now, loosen the set screw on the bottom of the sidemount fitting and position the upper rail (now installed with sidemounts on both sides) back and forth between the sidemount fittings until the Glass Panel Connectors are centered between posts and plumb (vertical). When centered and aligned properly, tighten down the set screws using the 3mm Allen wrench to prevent the upper rail from rotating or sliding in either direction. Continue around the deck installing all straight upper rails before continuing.

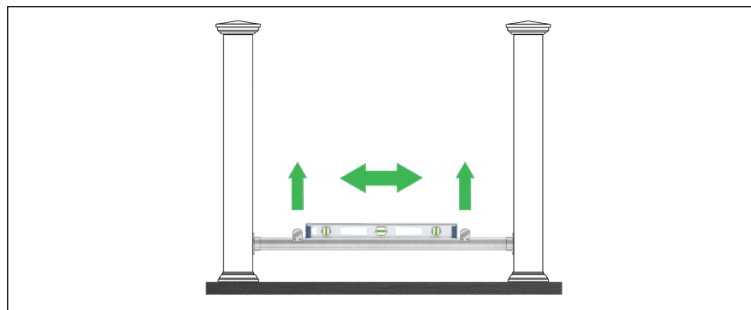


Figure D. With 1 sidemount installed, level rail and mark, pre-drill and install the other sidemount. Make sure Glass Panel Connectors are centered and plumb (vertical).

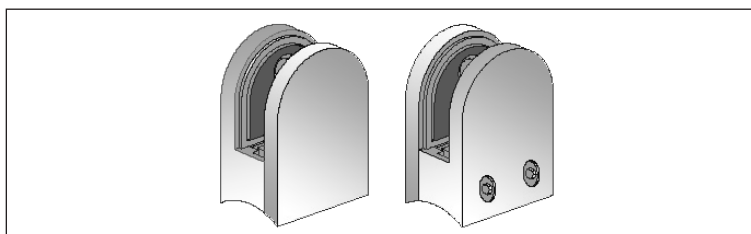


Figure E. Loosen the side of each Glass Panel Connector on the lower and upper rails and remove the plastic pins for the glass panels to be inserted.

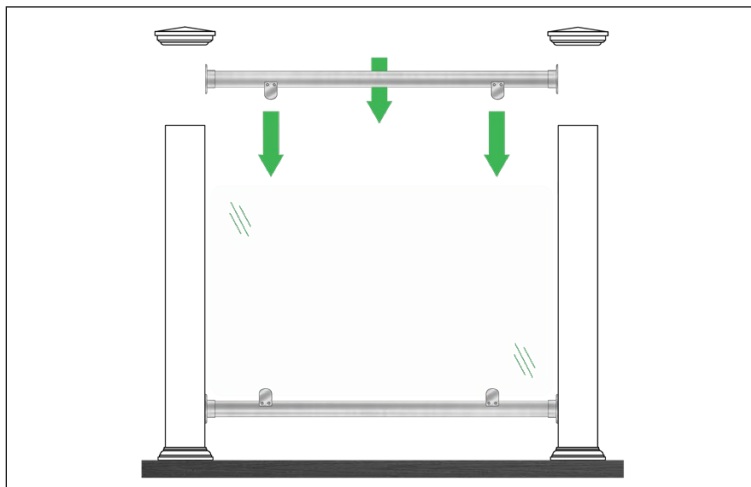


Figure F. With a partner, gently push the upper rail down onto the glass infill until it is snug against the lip of the Glass Panel Connector. Mark the 3 holes of each sidemount fitting.

Install Glass Infill

Remove the side of each Glass Panel Connector on the lower and upper rails (now installed) using a 4 mm Allen wrench to allow for the glass panel to be positioned securely between the neoprene pads. Ensure the hardware is stored in a safe place when removed. Position the glass infill between the neoprene pads of the lower rail and upper rail. Center the glass panel. Re-attach the Glass Panel Connector sides (See Figure G).

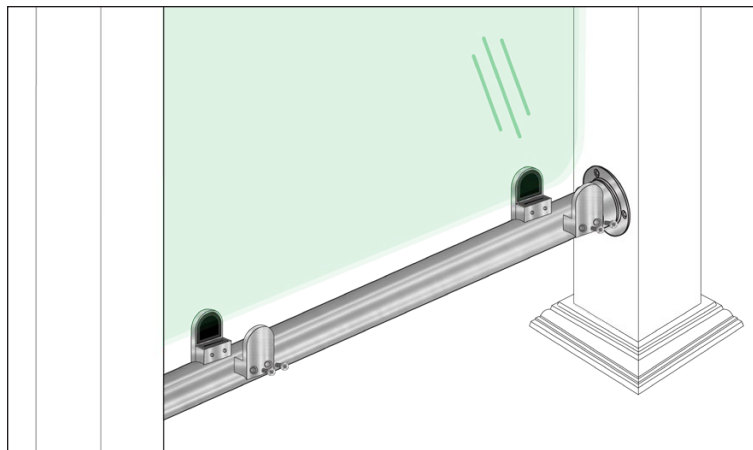


Figure G. Remove the side of each Glass Panel Connector and install glass infill between neoprene pads and center. Re-attach Glass Panel Connector sides.

Stair & Ramp Section - Installing Rails & Glass

Measure & Mark Adjustable Sidemounts

As before, begin with a square, tape measure and pencil to find the center of the post face. Using the same technique as before, measure from the surface of the deck up to the appropriate height. Mock up the base of the adjustable sidemount and mark the center of the screw holes in the same fashion as the straight sidemount (See Figure H). Repeat on the opposite post. Tighten down internal screw as far as you can while still maintaining the adjustability of the angle.

Additional Tool: An 8 mm (5/16") Allen wrench is used to tighten the internal set screw.

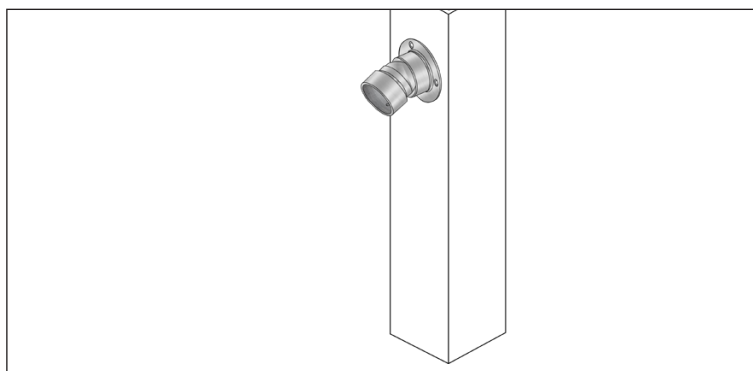
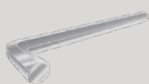


Figure H. Once the center of the post face is found, mark the center of the screw holes of the adjustable sidemount.

Dry Fit Stair Rail Sections

Before installing the rail in the fitting it is important to be sure that the length of tubing is correct for the rail section. With a partner, place an adjustable sidemount fitting (part # C0976-0002) on either end of the appropriate tube. Position assembly in between two posts and adjust accordingly. Measure from the leading edge of the tread up to the bottom of the lower rail. This should be consistent tread to tread (See Figure I). With the rail mocked up in place, mark and drill the screw holes using a 1/8" drill bit.

Install The Lower Rail

Begin with the adjustable sidemount fitting on the bottom post. Install this fitting separate from the rail. You can move the fitting out of its own way to screw in the top screw. Fasten the fitting with three (3) #10 x 1-1/2" screws (supplied). When secure, position the other adjustable sidemount onto the lower rail and insert the lower rail assembly into the bottom adjustable fitting. Install the top adjustable sidemount in the same fashion and secure to post. Be sure the Glass Panel Connectors are facing upwards.

Install The Upper Rail

Make sure you have the correct sized glass panel for your stairs. Begin by mocking up the upper rail as before and putting it aside. Next with the Glass Panel Connectors

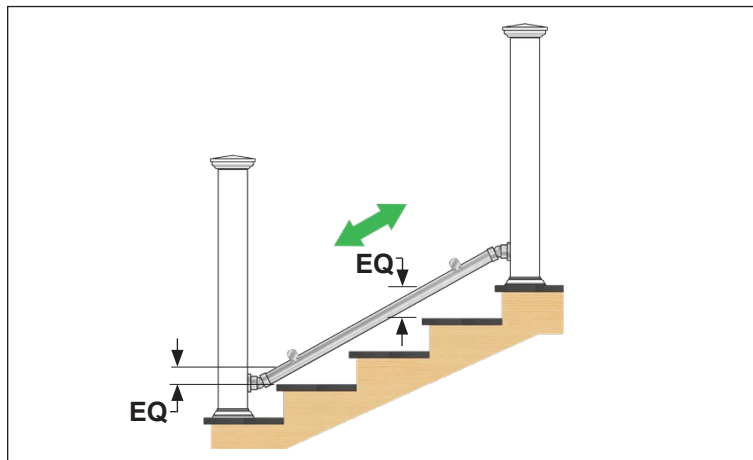


Figure I. Measure from the leading edge of the tread up to the bottom of the lower rail. This measurement should be consistent tread to tread.

centered and aligned properly on the lower rail, loosen the side of each Glass Panel Connector on the lower and upper rails and remove the plastic pins to allow for the glass panel to be temporarily inserted.

With a partner insert the glass panel into the bottom rail Glass Panel Connectors and ensure it is snug against the bottom lip of the Glass Panel Connector. While holding the glass panel securely, have your partner push the upper rail gently down onto the glass infill ensuring the Glass Panel Connectors are facing downward.

With a pencil, mark the three (3) holes of each adjustable sidemount fitting (See Figure J). Remove the upper rail and set aside. Carefully remove the glass panel infill and set aside. Pre-drill holes as before. Position the upper rail with the adjustable sidemount fittings to the post and install. Align the adjustable sidemount fitting to the other post and lay flush against. Double check fit and install.

Now, loosen the set screw on the bottom of the adjustable sidemount fittings and position the upper rail back and forth between the fittings until the Glass Panel Connectors are centered between posts and plumb (vertical). When centered and aligned properly, tighten down the set screws.

Install Glass Infill

Remove the side of each Glass Panel Connector on the lower and upper rails (now installed) for the glass panel to be positioned between the neoprene pads. Position the glass infill between the neoprene pads of the lower rail and upper rail. Center the glass panel. Reattach the Glass Panel Connector sides and tighten using a 4 mm Allen wrench (See Figure K).



WHEN INSTALLING YOUR GLASS PANELS, MAKE SURE YOUR GLASS CONNECTORS FACE THE SAME DIRECTION (SCREWS FACING INWARDS)

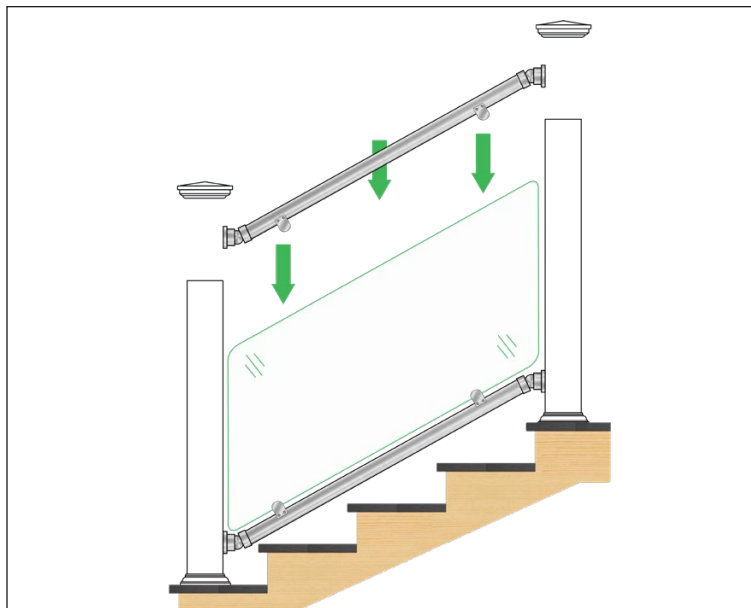


Figure J. Gently push the upper rail down onto the glass infill until it is snug against the lip of the Glass Panel Connector. Mark the 3 holes of each sidemount fitting.

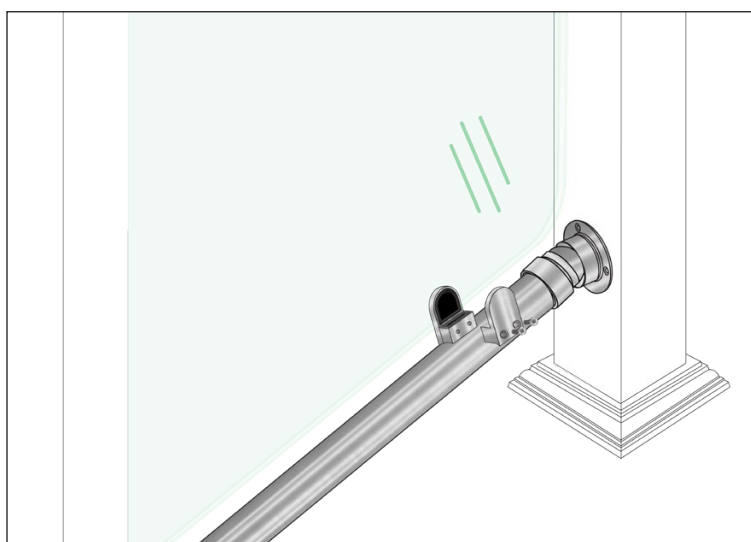


Figure K. Remove the side of each Glass Panel Connector and install glass infill between neoprene pads and center. Re-attach Glass Panel Connector sides.

Additional Components

Glass Panel Connector - 1/2" - (S0950-0013)

This heavy duty glass panel connector uses 3/8" to 1/2" thick glass. It is specially shaped to fit the outside of 2" tubing and attached by a screw into a rivet nut placed into the tubing. The bolt and rivet are hidden by the connector. The connector opens on one side after installation to allow glass to be positioned between neoprene pads included (See Figure L).



Figure L. Glass Panel Connector - 1/2" (S0950-0013).

Glass Panel Connector - Flat - (S0950-F010)

This heavy duty glass panel connector uses 3/8" to 1/2" thick glass. The connector is flat to mount to any flat surface. The bolt and rivet are hidden by the connector. The connector opens on one side after installation to allow glass to be positioned between neoprene pads included (See Figure M).



Figure M. Glass Panel Connector - Flat (S0950-F010).

Glass Panel Base - (S0925-0010)

The heavy duty Glass Panel Base is used with 3/8" to 1/2" thick glass. The base is mounted with 4 fasteners (not included) and a skirt is placed on top for a finished look. A plastic insert (supplied) fits inside and wraps around the glass. Set screws (supplied) hold the glass in place. Additional plastic wedges are included to give the glass a snug fit. (See Figure N).

Micro Star Transformers - (S0802-0001 & S0832-0005)

The Micro Star Transformers (See Figure O) are used with all Micro Star lighting products. The heavy duty, water resistant construction provides years of reliable service. These transformers are DC and UL approved. The 5 amps (part # S0832-0005) features a 6 ft. power cord and a 10 ft. connector lead. Available in 1 amp or 5 amps.



USE DC TRANSFORMER ONLY! RISK OF ELECTRICAL SHOCK. INSTALL ONLY TO A COVERED CLASS A GFCI RECEPTACLE THAT HAS A WATERPROOF ENCLOSURE WITH THE ATTACHMENT PLUG CAP INSERTED OR REMOVED.

Micro Star LED Light - (S0801-PC01)

The Micro Star LED Light is the smallest self-contained LED on the market (See Figure P). These LED lights are available in 12v and each draws only .02 amps. Being completely waterproof and encased in a 316 stainless steel housing, these lights are able to stand up to the most demanding environments. The Micro Star LED Light is both a functional and creative lighting alternative.



IF INSTALLING THE MICRO STAR LED LIGHTING, PLEASE REFER TO THE MICRO STAR INSTALLATION INSTRUCTIONS FOR SUNRAIL SYSTEMS.

Micro Star LED Post Cap - (S0985-0000)

The illuminated LED vinyl post cap includes 4 super bright white LED lights in each corner (See Figure Q). It provides sufficient lighting for stairs and walkways. Cap fits over standard 4"x4" vinyl sleeves and is compatible with the RailEasy Sleeve and Micro Star transformer. Post cap arrives pre-wired for easy and quick installation. Fasteners included. Color: White.

RailEasy Colonial Post Cap - (S0984-0000)

The vinyl post cap fits over standard 4"x4" vinyl post sleeves (See Figure R), including the RailEasy Sleeve. This post cap is constructed of durable vinyl. Color: White.

RailEasy Colonial Post Base - (S0984-0001)

The vinyl post base fits over standard 4"x4" vinyl sleeves (See Figure S) including the RailEasy Sleeve. This post skirt is constructed of durable vinyl. Always install the post skirt over the sleeve at the base first before installing the railing sections. Color: White.



Figure N. Glass Panel Base - Flat (S0925-0010).



MICRO STAR TRANSFORMER NO LONGER HAS AN OPTICAL LIGHT SENSOR. IT MUST PHYSICALLY BE TURNED ON AND OFF.



Figure O. Micro Star Transformers (S0832-0001 & S0832-0005).



Figure P. Micro Star LED Light (S0801-PC01).



Figure Q. Micro Star LED Post Cap (S0985-0000).



Figure R. RailEasy Colonial Post Cap (S0984-0000).



Figure S. RailEasy Colonial Post Base (S0984-0001).

RailEasy Sleeve - (S0983-1000)

The vinyl sleeve is designed to fit over standard 4" x 4" wood posts (See Figure T). These sleeves can be used in conjunction with the colonial post cap and base. They are made from durable vinyl and offer a nice accent to any glass railing system. Color: White.

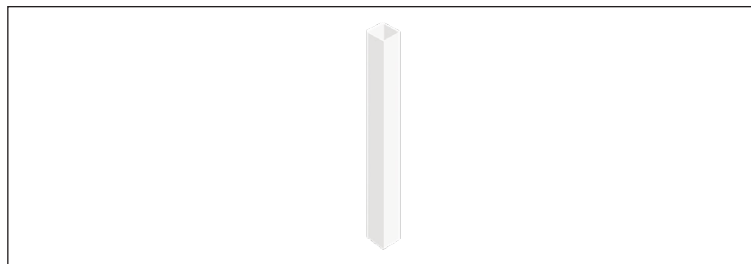


Figure T. RailEasy Sleeve (S0983-1000).

RailEasy Glass System Specifications

The RailEasy Glass System combines the modern look of a stainless steel top and bottom rails and glass infill with your wood or vinyl posts. The rails arrive with glass clamps pre-attached for a quick installation and creation of a fabulous glass railing system. Glass railings create a perfect barrier against the wind without blocking your view. You will also enjoy the low maintenance quality of stainless steel railings.

Straight Sections

Atlantis Rail offers standard rail heights of 36" or 42" for straight sections.



**ATLANTIS RAIL PROVIDES THE RAILINGS ONLY.
ATLANTIS RAIL DOES NOT OFFER GLASS PANELS AS
PART OF THE RAILEASY GLASS SYSTEM.**

Stair Sections

Rail height for stair sections is available in 36" only.



**RAILING HEIGHTS ARE RECOMMENDED IN THIS
DIMENSION DUE TO NATIONWIDE BUILDING
CODES.**

Between Post Lengths

Atlantis Rail recommends staying within 5' section lengths to maintain structural integrity.

Railing Finish

RailEasy Glass handrails and bottom rails are offered in a highly polished or brushed finish.

RailEasy Glass Product Specifications

Components

Product	Description	Dimensions	Fasteners	Notes
S0950-0010	Glass Panel Connector - 3/8"	3/8" - 2.09" x 1.52" x 2.00"	--	Neoprene Pads
S0950-0013	Glass Panel Connector - 1/2"	3/8" to 1/2" - 2.33" x 2.13" x 2.00"	--	Neoprene Pads
S0950-F010	Glass Panel Connector - Flat	3/8" to 1/2" - 1.97" x 1.10" x 1.57"	--	Neoprene Pads
S0925-0010	Glass Panel Base	3/8" to 1/2" - 3.96" x 3.96" x 6.36"	Not Included	Plastic Insert & Wedges
C0925-1200	RailEasy Glass Panel Kit - 4'	48" - 316L stainless steel	--	Polished Finish
C0925-1500	RailEasy Glass Panel Kit - 5'	60" - 316L stainless steel	--	Polished Finish
C0925-1800	RailEasy Glass Panel Kit - 6'	72" - 316L stainless steel	--	Polished Finish
C0975-0002	RailEasy Straight Sidemount	2" - 316L stainless steel	(3) #10 x 1-1/2"	2 Pack
C0976-0002	RailEasy Adjustable Sidemount	2" - 316L stainless steel	(3) #10 x 1-1/2"	2 Pack
S0832-0001	Micro Star Transformer - 1 amp	100-240Vac - 50/60HZ	--	--
S0832-0005	Micro Star Transformer - 5 amps	100-240Vac - 50/60HZ	--	--
S0801-PC01	Micro Star LED Light	12 Volt DC	Push Connector (Male)	Color: White
S0985-0000	Micro Star LED Post Cap	4.03" x 5.75" x 2.13"	--	White Vinyl
S0984-0000	RailEasy Colonial Post Cap	4.03" x 5.75" x 2.13"	--	White Vinyl
S0984-0001	RailEasy Colonial Post Base	4.03" x 6.00" x 1.42"	--	White Vinyl
S0983-1000	RailEasy Sleeve	4" x 4" x 48"	--	White Vinyl