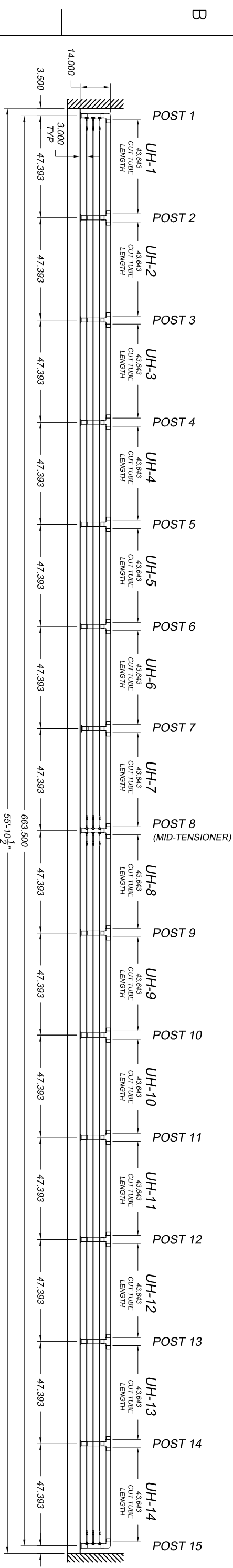
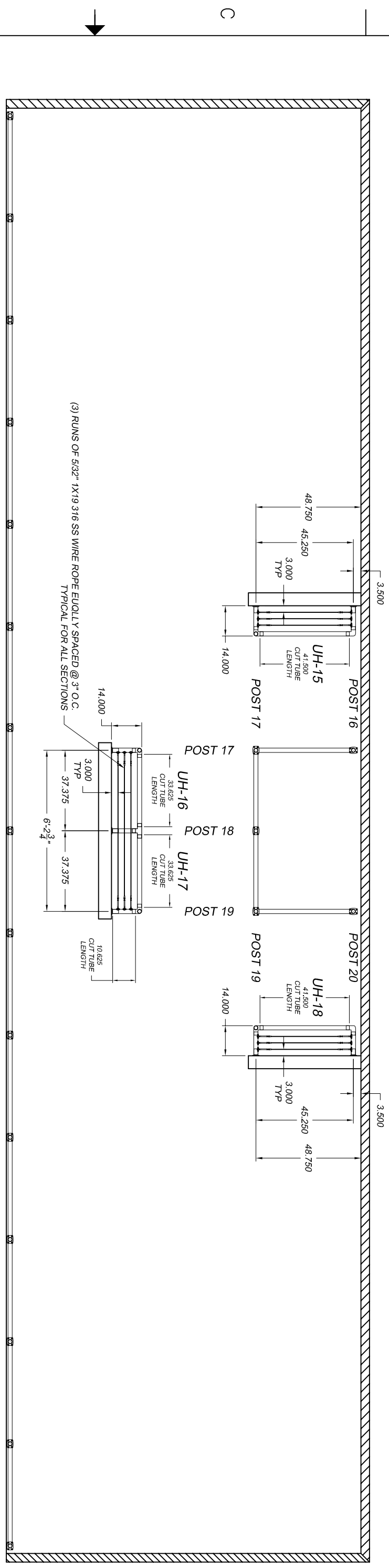


THE INFORMATION CONTAINED IN THIS DRAWING IS THE SOLE PROPERTY OF SUNCOR STAINLESS. ANY REPRODUCTION IN PART OR WHOLE WITHOUT THE WRITTEN PERMISSION OF SUNCOR STAINLESS IS PROHIBITED.

Deck or mounting area and stair dimensions MUST be confirmed by the customer and or contractor. Suncor/Atlantis rail will NOT be responsible for errors or misinterpretations of the railing system designed by us based upon customer confirmed dimensions. Additional drawing time to change the design or correct for errors after signing will result in additional costs as well as any changes to parts made per the drawing. Carefully review the drawing before signing and accepting.

- NOTES:
1. HAND RAIL SYSTEM CONSISTING OF SUNRAIL STYLE WITH HORIZONTAL WIRE ROPE.
 2. DRAWING AND DIMENSIONS BASED UPON CUSTOMER SUPPLIED DRAWINGS
 3. ALL DIMENSIONS AND RAILING DETAILS ARE PENDING CUSTOMER APPROVAL
 4. 1 1/2" HAND RAIL SYSTEM CONSISTING OF 2" DIA POLISHED 16 GAUGE 316 SS TUBING, CAST 316 SS FITTINGS, EPOXY CONNECTIONS AT JOINTS



REV	DESCRIPTION	DATE	APPROVED
A	SAMPLE DRAWING	X/XX/XX	XX

CUSTOMER SIGNATURE: _____ DATE: _____

<p>UNLESS OTHERWISE SPECIFIED DIMENSIONS ARE TO FACE UNLESS INDICATED OTHERWISE</p>		<p>FOR QUOTED PRICING PLEASE SPECIFY QUANTITY AND FINISH</p>	
MATERIAL	316SS	FINISH	POLISHED
APPROVALS	DATE	APPROVALS	DATE
DESIGNED	XXXX/XX	CHECKED	XXXX/XX
MANUFACTURED	XXXX/XX	WELDING	XXXX/XX
FINISH	POLISHED	PAINTING	XXXX/XX
SCALE	1/8" = 1'-0"	DATE	XXXX/XX

SUNRAIL NAUTILUS 1 CUSTOM HEIGHT SAMPLE DRAWING

ORDER NO. XXXXXX

SCALE: 1/8" = 1'-0"



8 7 6 5 4 3 2 1