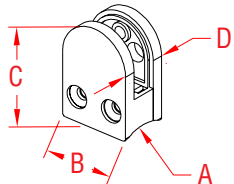


# GLASS PANEL CONNECTOR - 3/8"

316 STAINLESS STEEL



ITEM

SIZE

A

B

C

D

WT

**POLISHED**

**S0950-0010**

2"

2.00"

1.52"

2.09"

3/8"

(lb)

0.40

**BRUSHED**

**S0950-0010-B**

2"

2.00"

1.52"

2.09"

3/8"

0.40

**NOTE:**

**Strong but smaller version used for 5/16" to 3/8" glass. Connector back is specially shaped to fit the outside of 2" tubing and attached by a screw into a rivet nut placed into the tubing (both not included); bolt and rivet are hidden by the connector.**

**Connector opens on one side after installation to allow glass to be positioned between neoprene pads (included). Rivets and fixing screws are supplied with complete rail systems.**