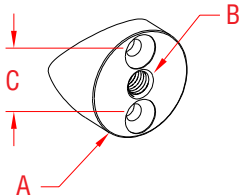


RAIL SUPPORT - 2" TUBE MOUNT

316 STAINLESS STEEL



ITEM

A

B

C

WT

(lb)

S0901-0404

2.00"

0.50"

1.25"

0.50

NOTE:

This tube mount base for rail supports is attached to 2 inch tubular posts using two rivet nuts and screws (supplied with complete systems). Use with the rail supports below.

