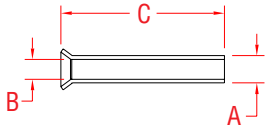


# HANDISWAGE™ CABLE SLEEVE

316L STAINLESS STEEL



ITEM

A

B

C

QTY.

WT

**10 PACK**

**C0915-0338**

0.22"

0.15"

1.50"

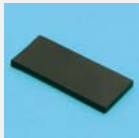
10

(lb)

0.08

**NOTE:**

**The HandiSwage™ Cable Sleeve is designed to protect your wood posts from chafing and incidental damage from cable rubbing around the outside of your mid post cable holes. It can also be used to accommodate angles up to 90 degrees and stairways coming off a straight run.**



**E0114-0000 - CABLE GRIP PAD (3 PACK)**

Use a Cable Grip Pad with vice grips when tensioning the cable. Place a pad on the cable and apply the vice action to the pliers to keep cable from rotating while you tension the stud.

**HANDISWAGE™**