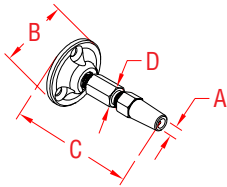


# RAILEASY™ SWIVEL END - FLAT

316 STAINLESS STEEL



ITEM

A

B

C

D

FAST.

WT

S0981-S004

5/32"

1.50"

2.64"

0.44"

#8

(lb)

0.12

**NOTE:**

**Patented swivel end is used for cable railing applications. Swivel end is used in conjunction with RailEasy™ Tensioner (S0981-0004) in order to tension cable. Slotted base allows for angles up to 45 degrees and is surface mounted with three #8, 1-1/2" stainless steel screws (not supplied).**

