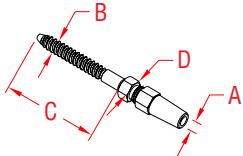


# RAILEASY™ LAG STUD

316 STAINLESS STEEL



ITEM	A	B	C	D	WT (lb)
<b>LEFT HAND</b> <b>S0980-L004</b>	5/32"	0.28"	2.25"	0.44"	0.08
<b>RIGHT HAND</b> <b>S0980-R004</b>	5/32"	0.28"	2.25"	0.44"	0.08

**NOTE:**

**Patented lag stud is used for cable railing applications. Stud is used on straight run with a RailEasy™ Tensioner (S0981-0004) to ensure cable tautness. LH and RH threads are available. Installation involves pre-drilling of posts and requires only simple hand tools.**