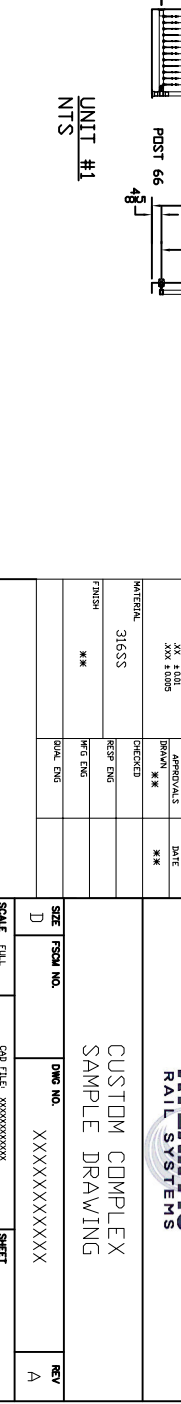
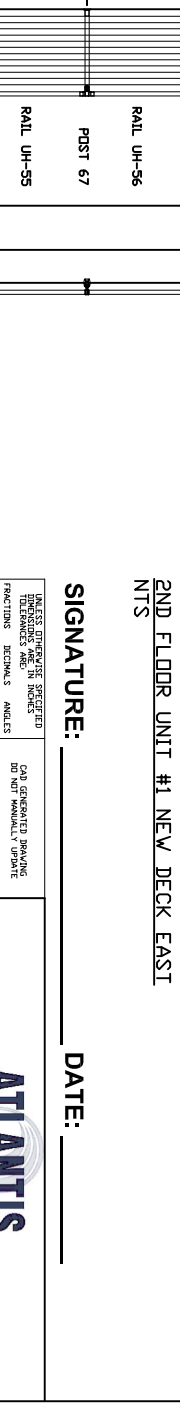
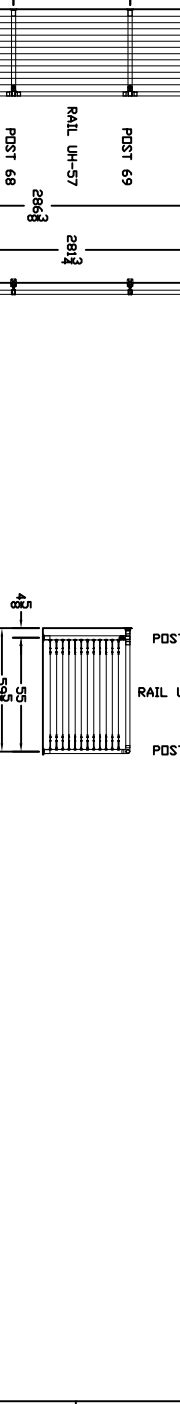
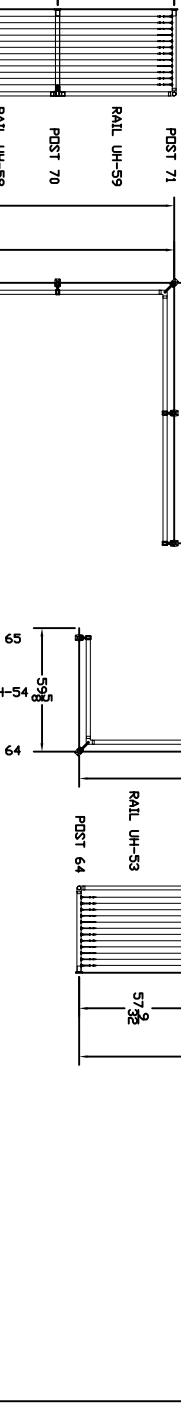
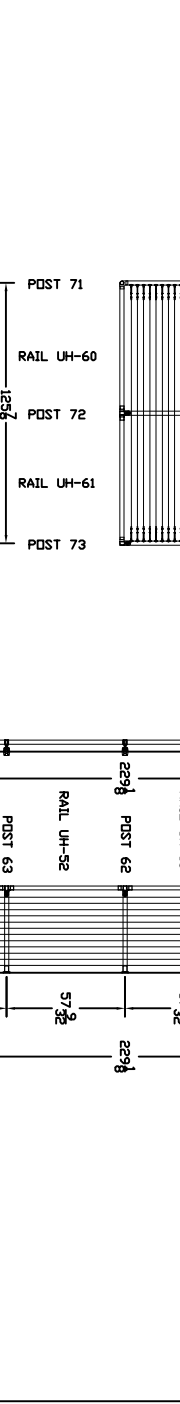
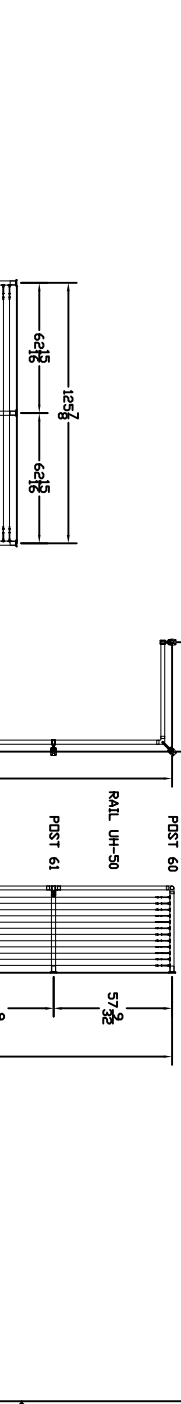
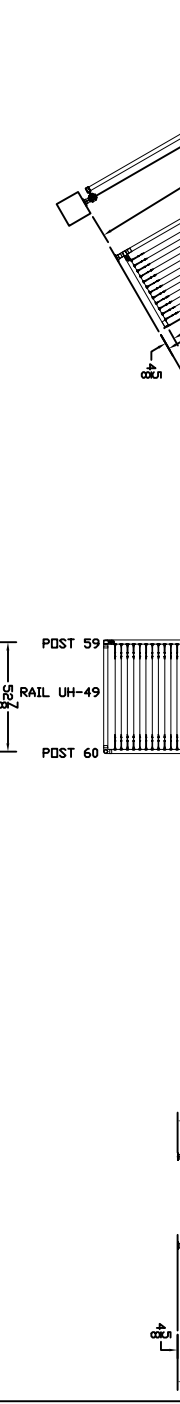
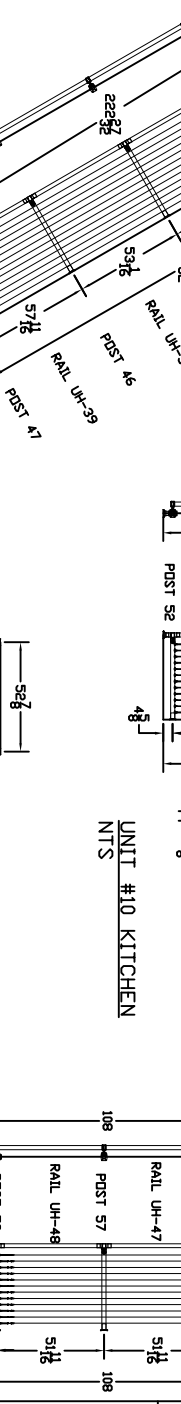
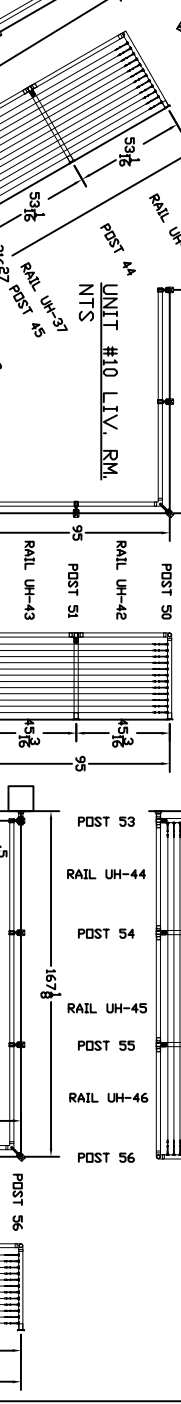
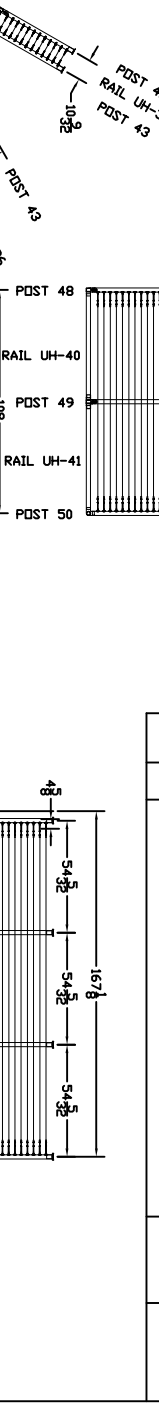
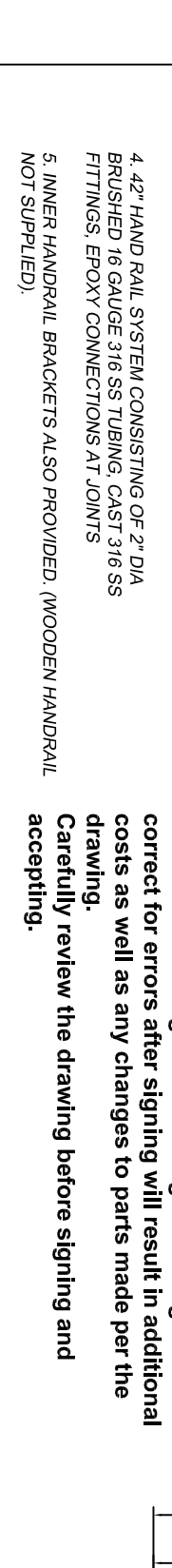
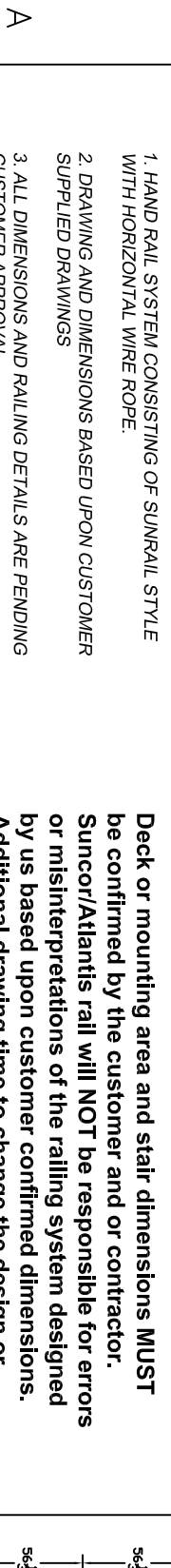
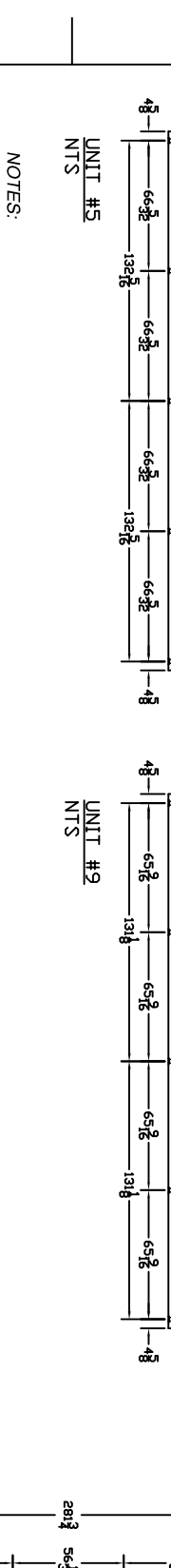
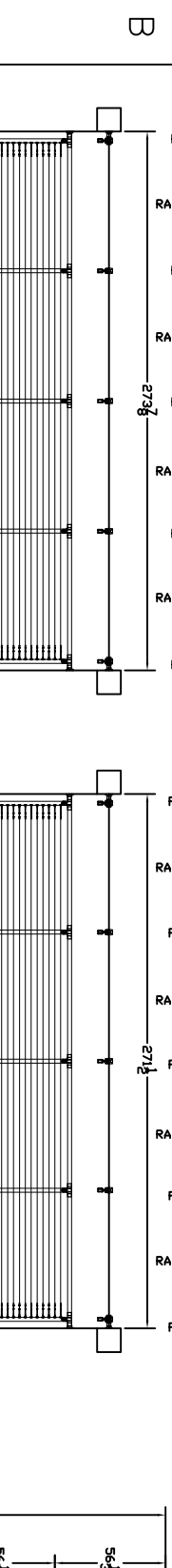
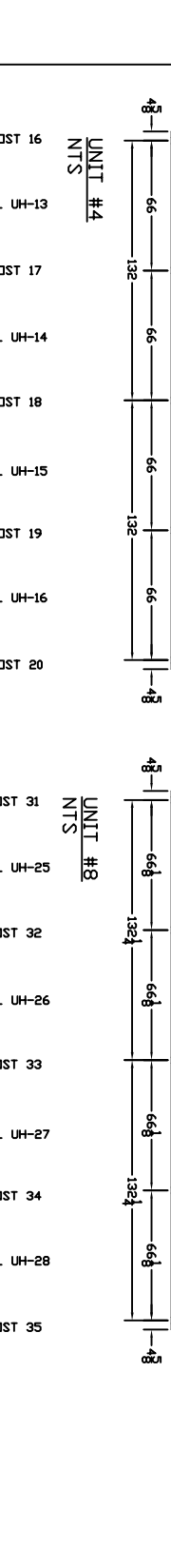
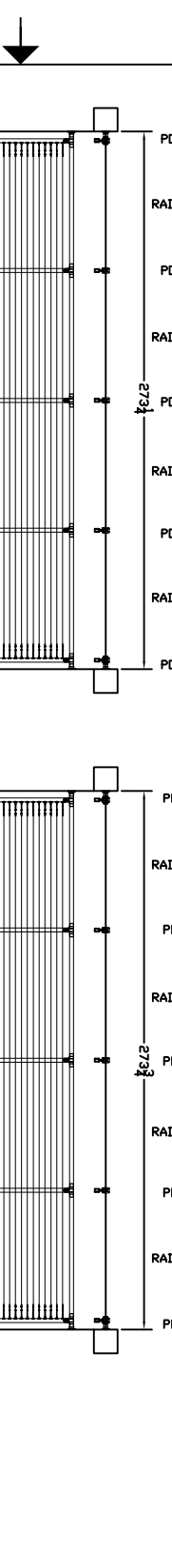
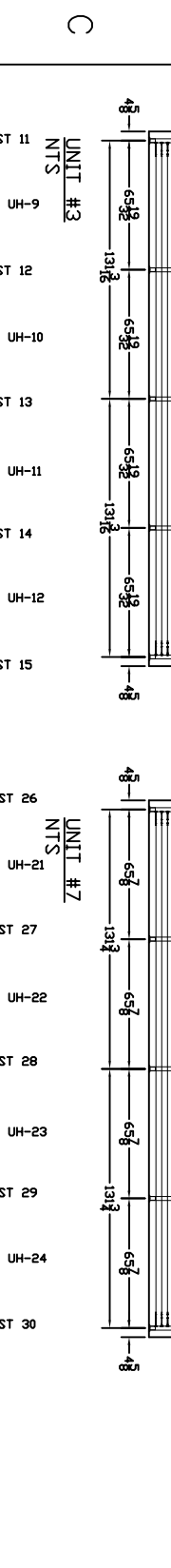
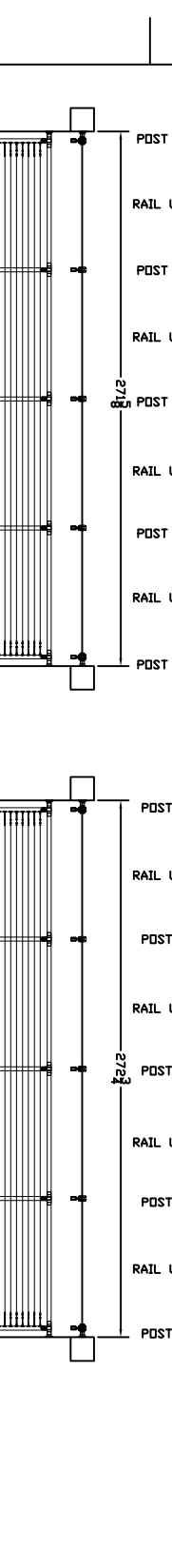
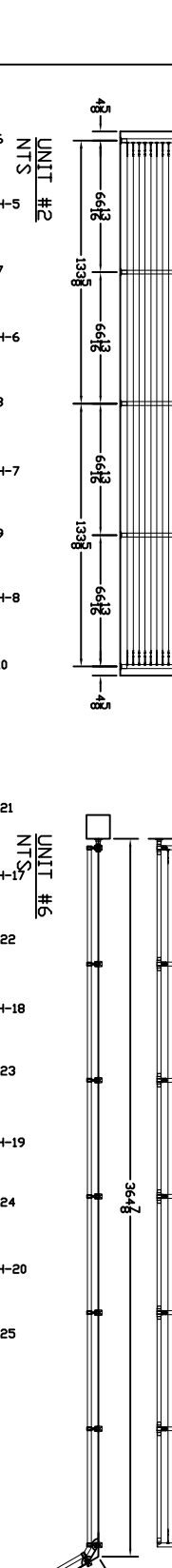
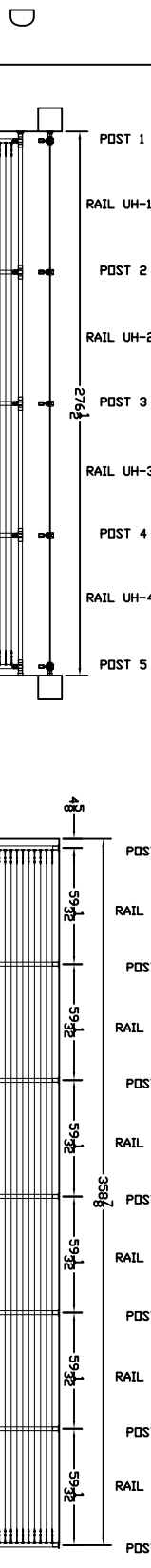


THE INFORMATION CONTAINED IN THIS DRAWING IS THE SOLE PROPERTY OF SUNCOR STAINLESS. ANY REPRODUCTION IN PART OR WHOLE WITHOUT THE WRITTEN PERMISSION OF SUNCOR STAINLESS IS PROHIBITED.

8 7 6 5 4 3 2 1



ZONE	REV	DESCRIPTION	DATE	APPROVED
A		NEW DRAWING	**	**

2ND FLOOR UNIT #1 NEW DECK EAST  
NTS

SIGNATURE: \_\_\_\_\_ DATE: \_\_\_\_\_

NOTES:  
1. HAND RAIL SYSTEM CONSISTING OF SUNRAIL STYLE WITH HORIZONTAL WIRE ROPE.  
2. DRAWING AND DIMENSIONS BASED UPON CUSTOMER SUPPLIED DRAWINGS  
3. ALL DIMENSIONS AND RAILING DETAILS ARE PENDING CUSTOMER APPROVAL  
4. 42" HAND RAIL SYSTEM CONSISTING OF 2" DIA BRUSHED 16 GAUGE 316 SS TUBING, CAST 316 SS FITTINGS, EPOXY CONNECTIONS AT JOINTS  
5. INNER HANDRAIL BRACKETS ALSO PROVIDED. (WOODEN HANDRAIL NOT SUPPLIED).

**ATLANTIS RAIL SYSTEMS**

CUSTOM COMPLEX SAMPLE DRAWING

SCALE: 1/4" = 1'-0"

SHEET: 1 OF 1

8 7 6 5 4 3 2 1