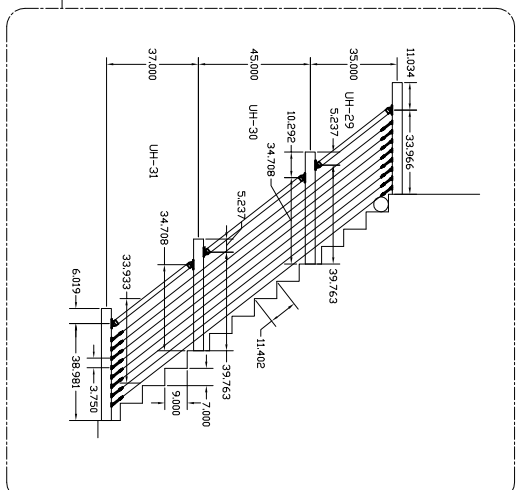
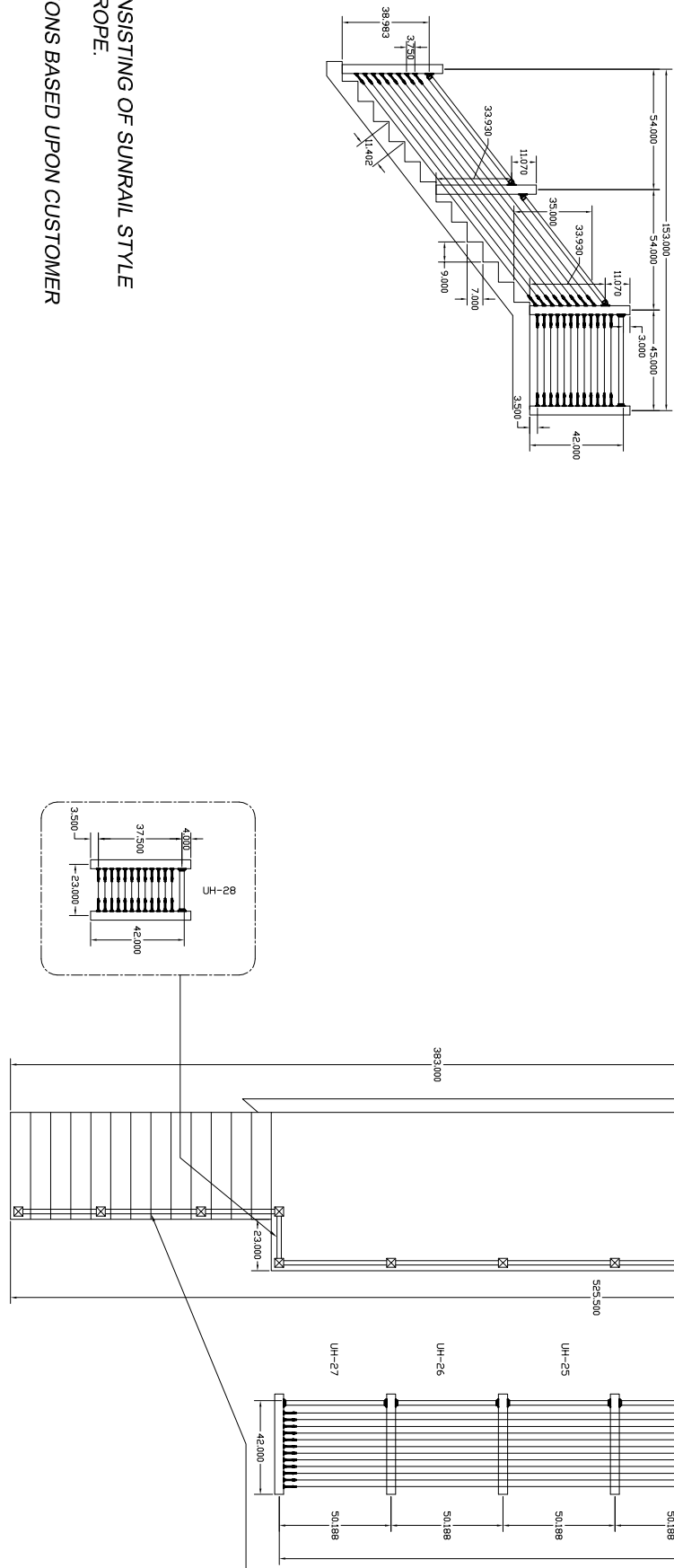
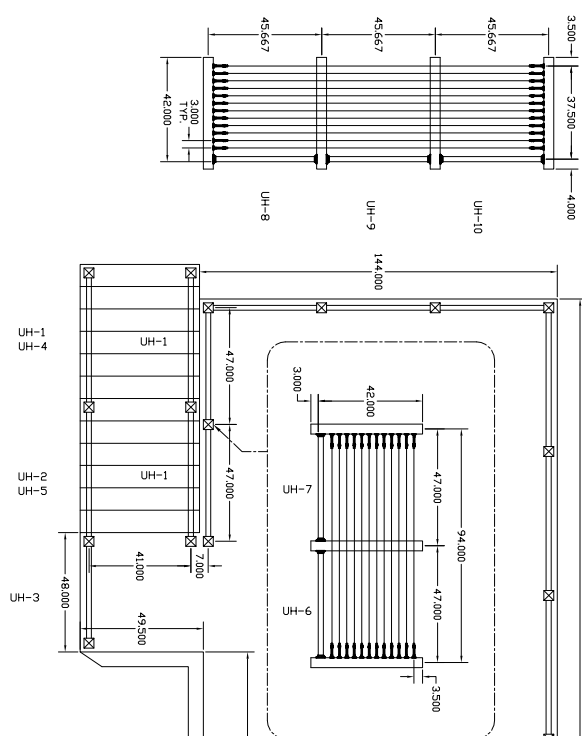
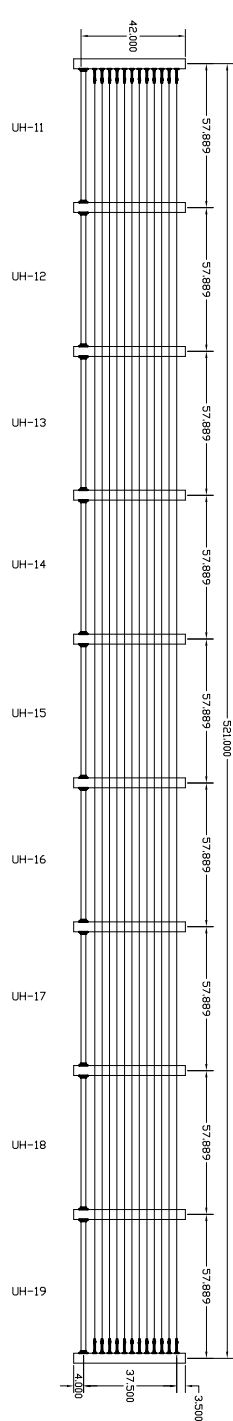


THE INFORMATION CONTAINED IN THIS DRAWING IS THE SOLE PROPERTY OF SUNCOR STAINLESS. ANY REPRODUCTION IN PART OR WHOLE WITHOUT THE WRITTEN PERMISSION OF SUNCOR STAINLESS IS PROHIBITED.

ZONE	REV	DESCRIPTION	DATE	APPROVED
A		NEW DRAWING	XXXX/XX	XXX



- NOTES:
- HAND RAIL SYSTEM CONSISTING OF SUNRAIL STYLE WITH HORIZONTAL WIRE ROPE.
 - DRAWING AND DIMENSIONS BASED UPON CUSTOMER SUPPLIED DRAWINGS
 - ALL DIMENSIONS AND RAILING DETAILS ARE PENDING CUSTOMER APPROVAL
 - 42" HAND RAIL SYSTEM CONSISTING OF 2" DIA BRUSHED 16 GAUGE 316 SS TUBING, CAST 316 SS FITTINGS, EPOXY CONNECTIONS AT JOINTS

SIGNATURE: _____ DATE: _____



ATLANTIS NAUTILUS 2 STAIRS
SAMPLE DRAWING

UNLESS OTHERWISE SPECIFIED		FOR QUANTIFIED DIMENSIONS	
TOLERANCES	FINISH	UNITS	CONVERSION
±.004	316SS	INCHES	1 INCH = 25.4 MM
±.001	XXXXXXX	MM	1 MM = 0.039 INCH

DATE	SCALE	SHEET
XX/XX/XXXX	D	1