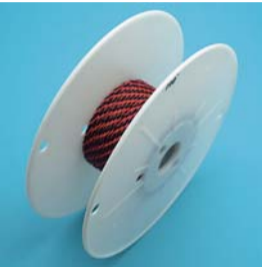


# LOW VOLTAGE WIRE



ITEM

LENGTH

WT

(lb)

S0987-0100

100'

1.64

**NOTE:**

**LOW VOLTAGE WIRE CONNECTS THE TRANSFORMER TO THE MICROSTAR™ LED LIGHTING. USED IN CASES WHERE THE POWER SOURCE IS FAR AWAY FROM THE RAILING SYSTEM. EXTRA WIRE DOES NOT COME STANDARD WITH A MICROSTAR™ PACKAGE. WIRE IS AVAILABLE UPON REQUEST.**