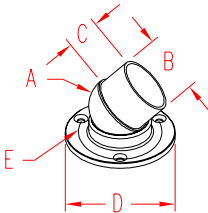


RAIL SIDEMOUNT - ADJ

316 STAINLESS STEEL



ITEM	SIZE	A	B	C	D	FAST.	WT
							(lb)
POLISHED							
S0976-0000	2"	2.00"	1.88"	1.06"	3.50"	#10	1.10
BRUSHED							
S0976-0000-B	2"	2.00"	1.88"	1.06"	3.50"	#10	1.10

NOTE:

PATENTED DESIGN OF ADJUSTABLE SIDEMOUNT CAN ACCEPT ANY ANGLE UP TO 45 DEGREES IN ONE OF FOUR DIRECTIONS, WHILE KEEPING THE PERPENDICULAR DIRECTIONS UNMOVABLE.

THE TUBE IS PLACED OVER THE END FOR A SEAMLESS FIT; REQUIRES SPECIAL EPOXY (SUPPLIED WITH COMPLETE SYSTEMS) TO BOND WITH TUBING.

