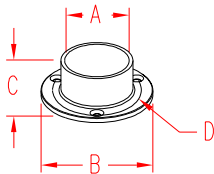


RAIL SIDEMOUNT - STRAIGHT

316 STAINLESS STEEL



ITEM	SIZE	A	B	C	D	FAST.	WT
							(lb)
POLISHED							
S0975-0000	2"	2.00"	3.50"	1.25"	2.88"	#10	1.10
BRUSHED							
S0975-0000-B	2"	2.00"	3.50"	1.25"	2.88"	#10	1.10

NOTE:

SIDEMOUNT IS TYPICALLY USED AS A SIDE MOUNT ONLY; USE AS A BASE IS NOT RECOMMENDED. THE O.D. OF THE PART MATCHES THE WIDTH OF A STANDARD VINYL POST, AND IS ALSO SUITABLE FOR OTHER TYPES OF STANDARD 4X4 POSTS.

TUBE IS PLACED INSIDE MOUNT, AND THEREFORE THE ENDS CAN BE CUT ON SITE; NO PRECISION CUTTING IS REQUIRED. SET-SCREW IS INCLUDED TO LOCK TUBING AND TO PREVENT TURNING.