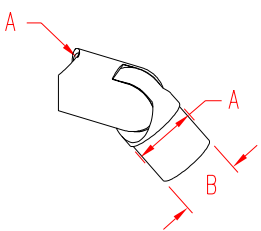


# RAIL ADJUSTABLE JOINT - LH

**316 STAINLESS STEEL**



**ITEM**

**SIZE**

**A**

**B**

**WT**

(lb)

***POLISHED***

**S0950-1021**

2"

2.00"

1.88"

2.00

***BRUSHED***

**S0950-1021-B**

2"

2.00"

1.88"

2.00

***NOTE:***

***USING ONE LH AND ONE RH JOINT FOR ELEVATION CHANGES, THEY ARE CAPABLE OF ABUTTING AS CLOSE AS 90 DEGREES AND AS WIDE AS 135 DEGREES ON SAME POST. SET INCLUDES PRE-ASSEMBLED MALE AND FEMALE SIDES, AND THE PATENTED SUNCOR DOVETAIL WITH A CONNECTING BOLT.***

***THE TUBE IS PLACED OVER THE END FOR A SEAMLESS FIT; REQUIRES SPECIAL EPOXY (SUPPLIED WITH COMPLETE SYSTEMS) TO BOND WITH TUBING.***

