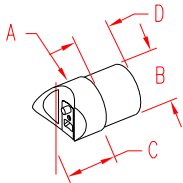


# DOVETAIL CONNECTOR - LH

316 STAINLESS STEEL



ITEM	SIZE	A	B	C	D	WT
						(lb)
<b>POLISHED</b>						
<b>S0950-1011</b>	2"	2.00"	1.88"	1.88"	1.50"	0.80
<b>BRUSHED</b>						
<b>S0950-1011-B</b>	2"	2.00"	1.88"	1.88"	1.50"	0.80

## NOTE:

**USING ONE LH AND ONE RH CONNECTOR, THEY ARE CAPABLE OF ABUTTING AS CLOSE AS 90 DEGREES AND AS WIDE AS 135 DEGREES ON THE SAME POST. THE PATENTED SUNCOR DOVETAIL WITH A CONNECTING BOLT IS INCLUDED IN THE SET.**

**THE TUBE IS PLACED OVER THE END FOR A SEAMLESS FIT; REQUIRES SPECIAL EPOXY (SUPPLIED WITH COMPLETE SYSTEMS) TO BOND WITH TUBING.**

