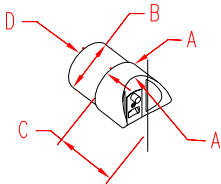


# DOVETAIL CONNECTOR- STR

316 STAINLESS STEEL



ITEM	SIZE	A	B	C	D	WT
						(lb)
<b>POLISHED</b>						
<b>S0950-1010</b>	2"	2.00"	1.88"	1.88"	1.50"	0.80
<b>BRUSHED</b>						
<b>S0950-1010-B</b>	2"	2.00"	1.88"	1.88"	1.50"	0.80

## NOTE:

**CONNECTOR FOR USE AT END OR MID POINT POSTS WHERE LOWER HORIZONTAL RAIL RUNS STRAIGHT THROUGH (180 DEGREES). FLEXIBILITY OF 5 DEGREES EITHER WAY IS BUILT IN. THE PATENTED SUNCOR DOVETAIL WITH A CONNECTING BOLT IS INCLUDED IN THE SET.**

**THE TUBE IS PLACED OVER THE END FOR A SEAMLESS FIT; REQUIRES SPECIAL EPOXY (SUPPLIED WITH COMPLETE SYSTEMS) TO BOND WITH TUBING.**

