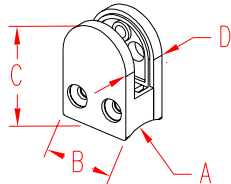


RAIL GLASS CONNECTOR 2

316 STAINLESS STEEL



ITEM	SIZE	A	B	C	D	WT
------	------	---	---	---	---	----

(lb)

POLISHED

S0950-0010

2"

2.00"

1.52"

2.14"

3/8"

0.40

BRUSHED

S0950-0010-B

2"

2.00"

1.52"

2.14"

3/8"

0.40

NOTE:

STRONG BUT SMALLER VERSION USED FOR 5/16" TO 3/8" GLASS. CONNECTOR BACK IS SPECIALLY SHAPED TO FIT THE OUTSIDE OF 2" TUBING AND ATTACHED BY A SPECIAL SCREW INTO A RIVET NUT PLACED INTO THE TUBING (BOTH NOT INCLUDED); BOLT AND RIVET ARE HIDDEN BY THE CONNECTOR.

CONNECTOR OPENS ON ONE SIDE AFTER INSTALLATION TO ALLOW GLASS TO BE POSITIONED BETWEEN THE NEOPRENE PADS (INCLUDED). RIVETS AND FIXING SCREWS ARE SUPPLIED WITH COMPLETE RAIL SYSTEMS.