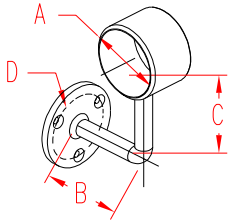


RAIL END SUPPORT - RH

316 STAINLESS STEEL



ITEM	SIZE	A	B	C	D	FAST.	WT
------	------	---	---	---	---	-------	----

(lb)

POLISHED

S0902-0403

2"

2.02"

2.75"

3.38"

1.88"

#10

0.92

BRUSHED

S0902-0403-B

2"

2.02"

2.75"

3.38"

1.88"

#10

0.92

NOTE:

THIS IS A ONE-PIECE END SUPPORT WITH FLAT MOUNTING PLATE, DESIGNED FOR CONTINUOUS 2" WALL MOUNTED HANDRAILS. THE RIGHT SIDE IS CLOSED SO THAT THE HANDRAIL IS CAPTURED BETWEEN THE LH AND RH SUPPORT. SUPPORT IS MOUNTED USING THREE #10 WOOD SCREW FASTENERS (NOT SUPPLIED).