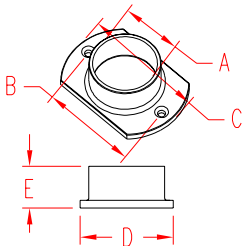


RAIL MOUNT - OVAL

316 STAINLESS STEEL



ITEM

SIZE

A

B

C

D

E

WT

(lb)

POLISHED

S0902-0301

2"

2.02"

3.04"

4.00"

2.75"

1.25"

0.55

BRUSHED

S0902-0301-B

2"

2.02"

3.04"

4.00"

2.75"

1.25"

0.55

NOTE:

OVAL RAIL MOUNT CAN BE USED AS A BASE OR AS A SIDE MOUNT. USED AS A BASE IT ALLOWS VERTICAL TUBING TO BE PLACED IN VERY CLOSE PROXIMITY TO A WALL OR VERTICAL SURFACE. USED AS A SIDE MOUNT THE PREFERRED INSTALLATION IS WITH THE TWO STRAIGHT EDGES VERTICAL.

TUBE IS PLACED INSIDE MOUNT, AND THEREFORE THE ENDS CAN BE CUT ON SITE; NO PRECISION CUTTING IS REQUIRED. SET-SCREW IS INCLUDED TO LOCK TUBING AND TO PREVENT TURNING.