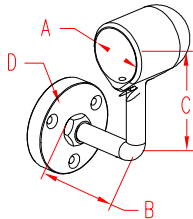


VAR. END SUPPORT RH - FLAT

316 STAINLESS STEEL



ITEM	SIZE	A	B	C	D	FAST.	WT
------	------	---	---	---	---	-------	----

(lb)

POLISHED

S0901-2403

1-1/2"

1.52"

2.78"

3.09"

1.88"

#10

1.38

BRUSHED

S0901-2403-B

1-1/2"

1.52"

2.78"

3.09"

1.88"

#10

1.38

NOTE:

PATENTED END SUPPORT DESIGNED FOR CONTINUOUS 1-1/2" HANDRAIL. THE RIGHT SIDE IS CLOSED SO THAT THE HANDRAIL IS CAPTURED BETWEEN THE LH AND RH END SUPPORTS. SET INCLUDES MOUNTING BASE FOR FLAT SURFACE, 360 DEGREE ADJUSTABLE HANDRAIL SUPPORT FOR 1-1/2" TUBE, LOCK NUT AND ONE SET SCREW TO PREVENT MOVEMENT OF HANDRAIL. MOUNTING BASE IS ATTACHED TO WALL USING THREE FASTENERS (NOT INCLUDED, AS MOUNTING SURFACES VARY).

