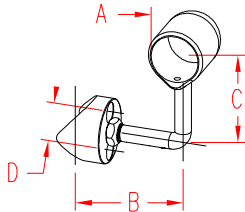


VAR. END SUPPORT RH - TUBE

316 STAINLESS STEEL



ITEM

SIZE

A

B

C

D

FAST.

WT

(lb)

POLISHED

S0901-1403

1-1/2"

1.52"

3.86"

3.09"

1.25"

5/16"

1.10

BRUSHED

S0901-1403-B

1-1/2"

1.52"

3.86"

3.09"

1.25"

5/16"

1.10

NOTE:

PATENTED END SUPPORT DESIGNED FOR CONTINUOUS 1-1/2" HANDRAIL. THE RIGHT SIDE IS CLOSED SO THAT THE HANDRAIL IS CAPTURED BETWEEN THE LH AND RH END SUPPORTS. SET INCLUDES MOUNTING BASE FOR 2" TUBE, 360 DEGREE ADJUSTABLE END HANDRAIL SUPPORT FOR 1-1/2" TUBE, LOCKNUT AND ONE SET SCREW TO PREVENT MOVEMENT OF THE HANDRAIL. MOUNTING BASE IS ATTACHED TO POST USING TWO RIVET NUTS AND SCREWS (SUPPLIED WITH COMPLETE SYSTEMS).

