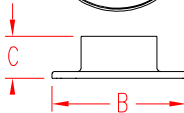
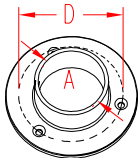


RAIL MOUNT - ROUND

316 STAINLESS STEEL



ITEM	SIZE	A	B	C	D	FAST	WT
------	------	---	---	---	---	------	----

(lb)

POLISHED

S0901-0303

1-1/2"

1.52"

2.93"

1.09"

2.36"

#10

0.45

S0902-0303

2"

2.02"

4.00"

1.25"

3.04"

#10

0.70

BRUSHED

S0901-0303-B

1-1/2"

1.52"

2.93"

1.09"

2.36"

#10

0.45

S0902-0303-B

2"

2.02"

4.00"

1.25"

3.04"

#10

0.70

NOTE:

TUBE IS PLACED INSIDE MOUNT, AND THEREFORE THE ENDS CAN BE CUT ON SITE; NO PRECISION CUTTING IS REQUIRED. SET-SCREW IS INCLUDED TO LOCK TUBING AND TO PREVENT TURNING.