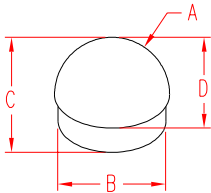


RAIL CAP - DOME

316 STAINLESS STEEL



ITEM	SIZE	A	B	C	D	WT
						(lb)
POLISHED						
S0901-0129	1-1/2"	1.50"	1.38"	1.35"	0.78"	0.15
S0950-0029	2"	2.00"	1.88"	1.56"	0.56"	0.26
BRUSHED						
S0901-0129-B	1-1/2"	1.50"	1.38"	1.35"	0.78"	0.15
S0950-0029-B	2"	2.00"	1.88"	1.56"	0.56"	0.26

NOTE:

DOME TOP CAP CLOSES POSTS AND TUBING AFTER INSTALLATION IS COMPLETE. MICROSTAR™ CABLE CONNECTIONS ARE ACCESSIBLE FROM THE TOP FOR MAINTENANCE BY PRYING OFF THE CAP. CHOICE OF CAP IS ACCORDING TO DESIRED LOOK OF RAIL SYSTEM.