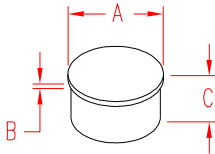


RAIL CAP - FLAT

316 STAINLESS STEEL



ITEM	SIZE	A	B	C	WT
					(lb)
POLISHED					
S0901-0128	1-1/2"	1.50"	0.15"	0.75"	0.12
S0950-0028	2"	2.00"	0.13"	1.13"	0.40
BRUSHED					
S0901-0128-B	1-1/2"	1.50"	0.15"	0.75"	0.12
S0950-0028-B	2"	2.00"	0.13"	1.13"	0.40

NOTE:

FLAT TOP CAP CLOSES POSTS AND TUBING AFTER INSTALLATION IS COMPLETE. MICROSTAR™ CABLE CONNECTIONS ARE ACCESSIBLE FROM THE TOP FOR MAINTENANCE BY PRYING OFF THE CAP. CHOICE OF CAP IS ACCORDING TO DESIRED LOOK OF RAIL SYSTEM.