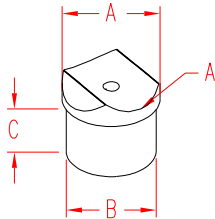


RAIL TEE CONNECTOR

316 STAINLESS STEEL



ITEM

SIZE

A

B

C

WT

(lb)

POLISHED

S0901-0107

1-1/2"

1.50"

1.38"

1.00"

0.20

BRUSHED

S0901-0107-B

1-1/2"

1.50"

1.38"

1.00"

0.20

NOTE:

THIS RAIL "T" ALLOWS CONNECTION OF A 1-1/2" CONTINUOUS TOP RAIL TO A 2" TUBULAR POST AT ANY DESIRED LOCATION. SPECIAL SHAPED BASE ALLOWS CONNECTORS TO BE ABUTTING AS CLOSE AS 90 DEGREES TO EACH OTHER.

REQUIRES FASTENER OR RIVET TO ATTACH CONNECTOR TO 2" TUBE AND SPECIAL EPOXY (SUPPLIED WITH COMPLETE SYSTEMS) TO BOND WITH TUBING.