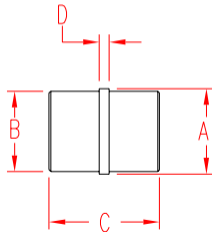


RAIL CONNECTOR

316 STAINLESS STEEL



ITEM	SIZE	A	B	C	D	WT
------	------	---	---	---	---	----

(lb)

POLISHED

S0901-0104	1-1/2"	1.50"	1.38"	2.60"	0.24"	0.25
S0902-0104	2"	2.00"	1.88"	3.25"	0.24"	0.40

BRUSHED

S0901-0104-B	1-1/2"	1.50"	1.38"	2.60"	0.24"	0.25
S0902-0104-B	2"	2.00"	1.88"	3.25"	0.24"	0.40

NOTE:

USED AS AN INSERT BETWEEN TWO LENGTHS OF TUBES TO CONNECT AND STRENGTHEN THE JOINT. APPLICATIONS INCLUDE LONG RUNS OF HANDRAIL USED WITH PART# S0902-0305 OR S0902-0401, REQUIRES SPECIAL EPOXY (SUPPLIED WITH COMPLETE SYSTEMS) TO BOND WITH TUBING.