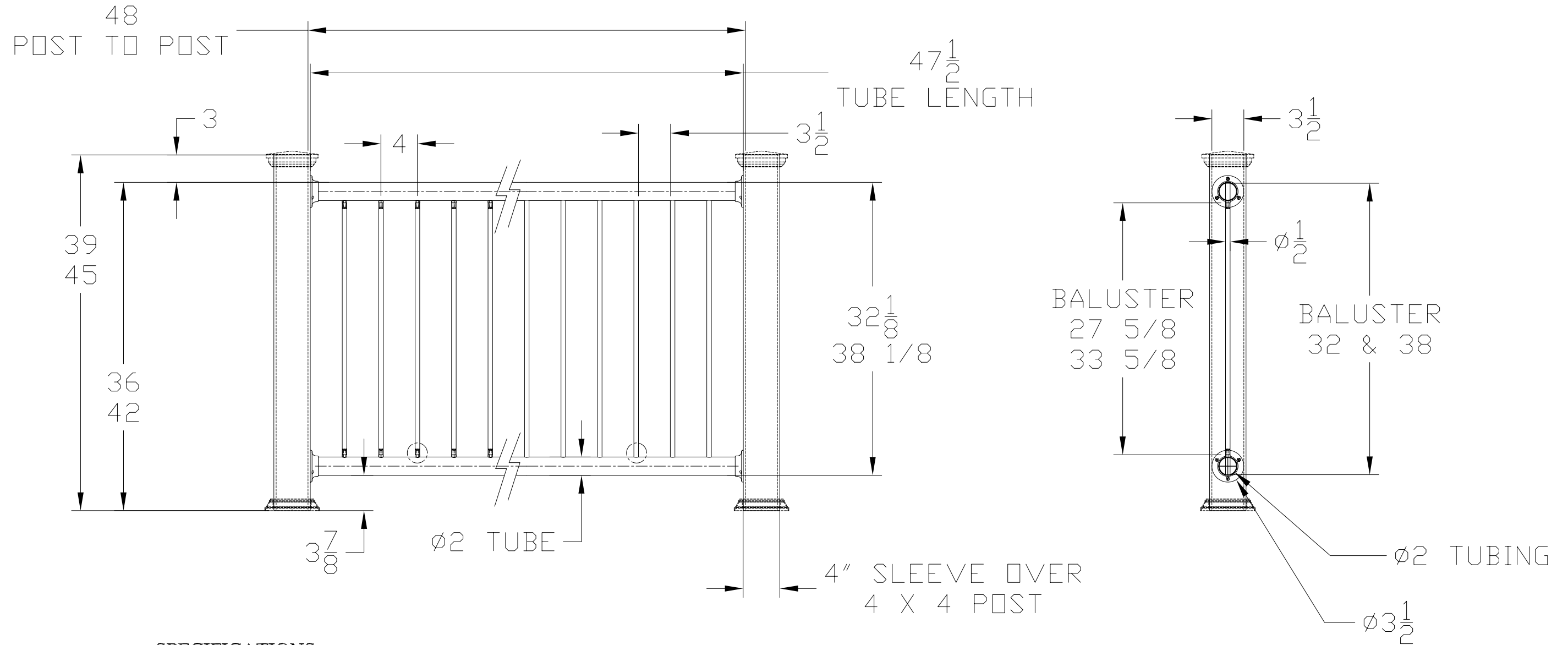


MARINER RAIL SYSTEM DESIGN PARAMETERS



SPECIFICATIONS:

RECOMMENDED SPAN: 48"(60" AVAILABLE) BETWEEN POSTS.

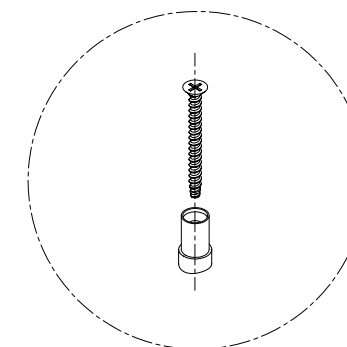
HANDRAIL: 2" DIAMETER 16 GAGE S/S 316 POLISHED TUBING.

BALLUSTER: 1/2" DIAMETER X 14 GAGE S/S 316 POLISHED TUBING.

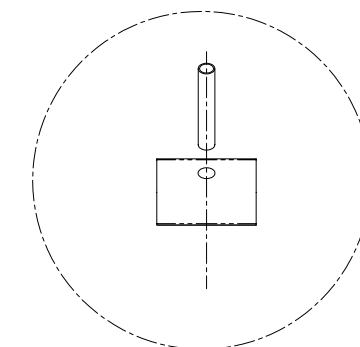
POSTS: 4X4 POSTS WITH VINYL SLEEVES, TOP AND BOTTOM CAP.

SECURED TO POSTS WITH MOUNTING BASES AND #10 S/S SCREWS.

BALUSTERS ARE MOUNTED USING FITTING, OR AS AN ALTERNATE CAPTURED IN HOLES BORED INTO THE TUBE.



MOUNTING FITTING FOR BALUSTER



ALTERNATE MOUNTING HOLE DRILLED IN TUBE FOR BALUSTER